

Split!

Split! Basic Training



Split!

To clean safer, smarter, and more effectively, you *MUST* clean without Detergents!





Split!

- Detergent free
- VOC & solvent free
- No oxidizers/bleaching agents (like peroxide)
- No bacteria or enzymes
- Patented ingredients for removing germs and bio-film
- Exceeds green testing standards

Non-Detergent Cleaning Explained:



- Conventional green cleaning products have been detergent-based.
- Detergents work by being sticky; they attract soil and hold onto it.
- Even when properly diluted, detergents leave behind a residue ON EVERY SURFACE they touch.
- This residue grabs soil from our shoes, wheels on carts, our hands, or anything else that touches the surface, which causes rapid re-soiling.
- Our revolutionary **Split!** Non-Detergent Cleaners contain no detergent at all.
- These industrial strength cleaners work not by sticking to soil, as detergents do, but by splitting the soil (all types of organic, non-solid molecules) into its smallest particles of matter, essentially blasting it into small enough bits that it can simply be wiped away.

Cleaning For Health!

ATP - Adenosine Triphosphate

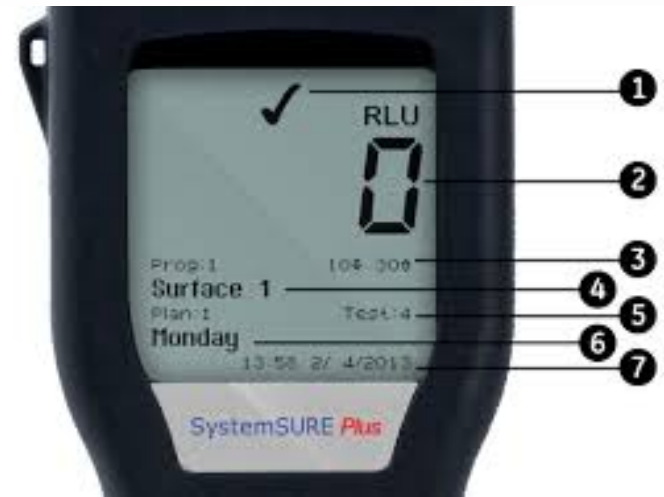
- ***Split!*** Non-Detergent Cleaners microscopically split all organic, non-solid molecules to pieces, on contact.
- Our patented ingredients for removal of bio-film cannot be matched by any detergent disinfectant. Not even close.
- Infection Prevention experts now more fully understand the role of bio-film in the transmission of nosocomial infections.
- A fundamental obstacle to our procedures for cleaning, sanitation, and infectious disease prevention, bio-film is comprised of biological pollutants that are or were living.



Cleaning For Health!

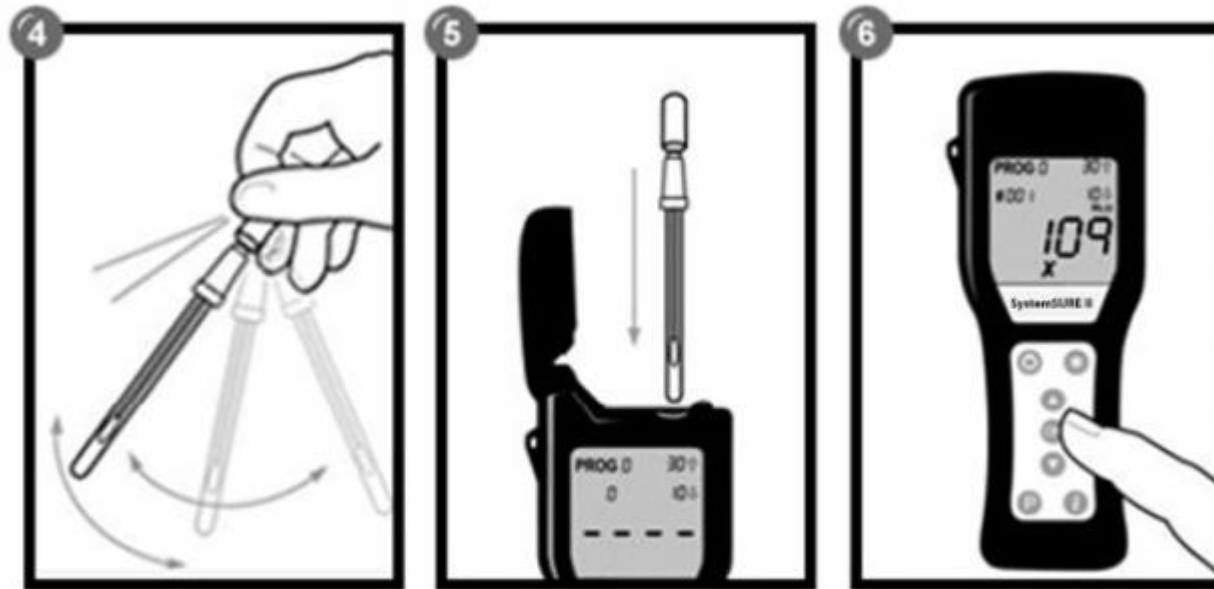
ATP - Adenosine Triphosphate

- Residue creates the ideal environment for germs to attach to a surface and thrive as a community.
- Even assuming detergent disinfectant procedures are killing 100% of the germs (which they are not) if we don't remove the bio-film their breeding grounds remain.
- Manufacturers of disinfectant detergents are aware of this, and say on their labels to use their products only on pre-cleaned surfaces.



Cleaning For Health!

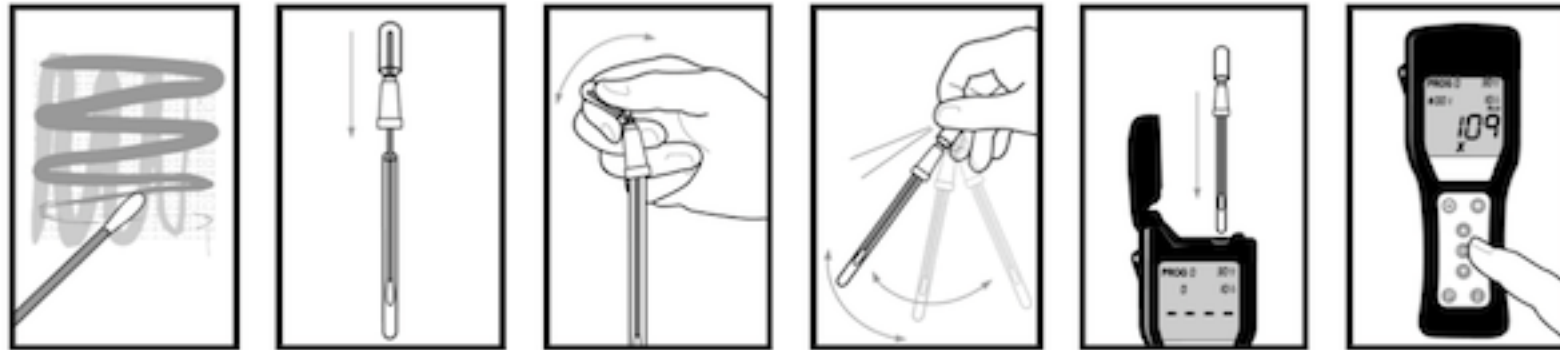
ATP - Adenosine Triphosphate



- We now have the real-time ability to measure **ATP** and the removal of **bio-film** from touch points in public areas and hospital environments.

Cleaning For Health!

ATP - Adenosine Triphosphate



- The System SURE *Plus* luminometer from Hygiena uses ATP technology to measure Adenosine Triphosphate, the universal energy molecule found in all living cells. Readings are measured in RLUs (Relative Light Units) in direct proportion to the amount of ATP present on a given surface or touch point.
- A reading of 0 to 10 indicates the surface as "pass"; 11 to 30 indicates "caution"; and 31 and above indicates "fail". Current detergent-based disinfectants and protocols may lower RLU readings to be somewhere close to 31. Split! Non-Detergent Cleaner lowers RLU readings to zero –on contact, virtually every time.

Split! Restorative Cleaner

Restoration Cleaning

The development of this revolutionary *Split!* Non-Detergent Cleaning method means that you can now remove an amazing assortment of cleaning nightmares you previously thought were unmovable.

- Traffic patterns.
- Stains on carpet.
- Yellowing and other discolorations
- Stains on finished or unfinished floors
- Discolored and impossible to clean tile and grout.
- All without any sticky detergents.



Split! Restorative Cleaner



Restoration Cleaning

- Carpet restoration
- Upholstery restorative cleaning
- Grouted Tile Floors
- Epoxy Floors
- Rubber Floors
- Synthetic Sports Floors
- Concrete Floors
- No-Wax Floors
- Finished Wood Floors
- Auto-Scrubbing Solution for restorative or stubborn dirt.
- Mopping solution for heavier dirt loads, front door entries, ice melt and wet walk in areas.
- Pool areas and locker room restoration



Split! Restorative Cleaner
Restoration Cleaning

Carpet



Split! Restorative Cleaner
Restoration Cleaning



C
A
R
P
E
T



***Split!* Restorative Cleaner**
Restoration Cleaning



Upholstery



***Split!* Restorative Cleaner**

Restoration Cleaning

Grouted Tile



Split! Restorative Cleaner

Restoration Cleaning

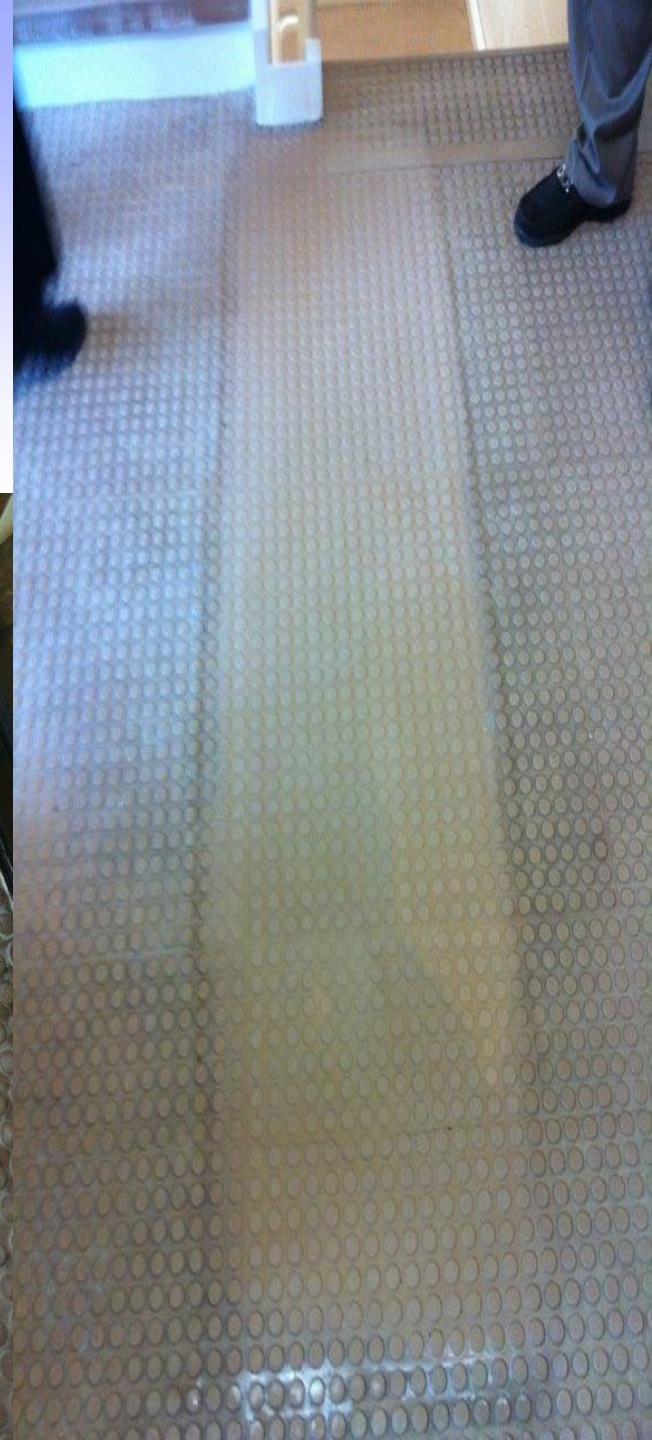
Epoxy Floors



Split! Restorative Cleaner

Restoration Cleaning

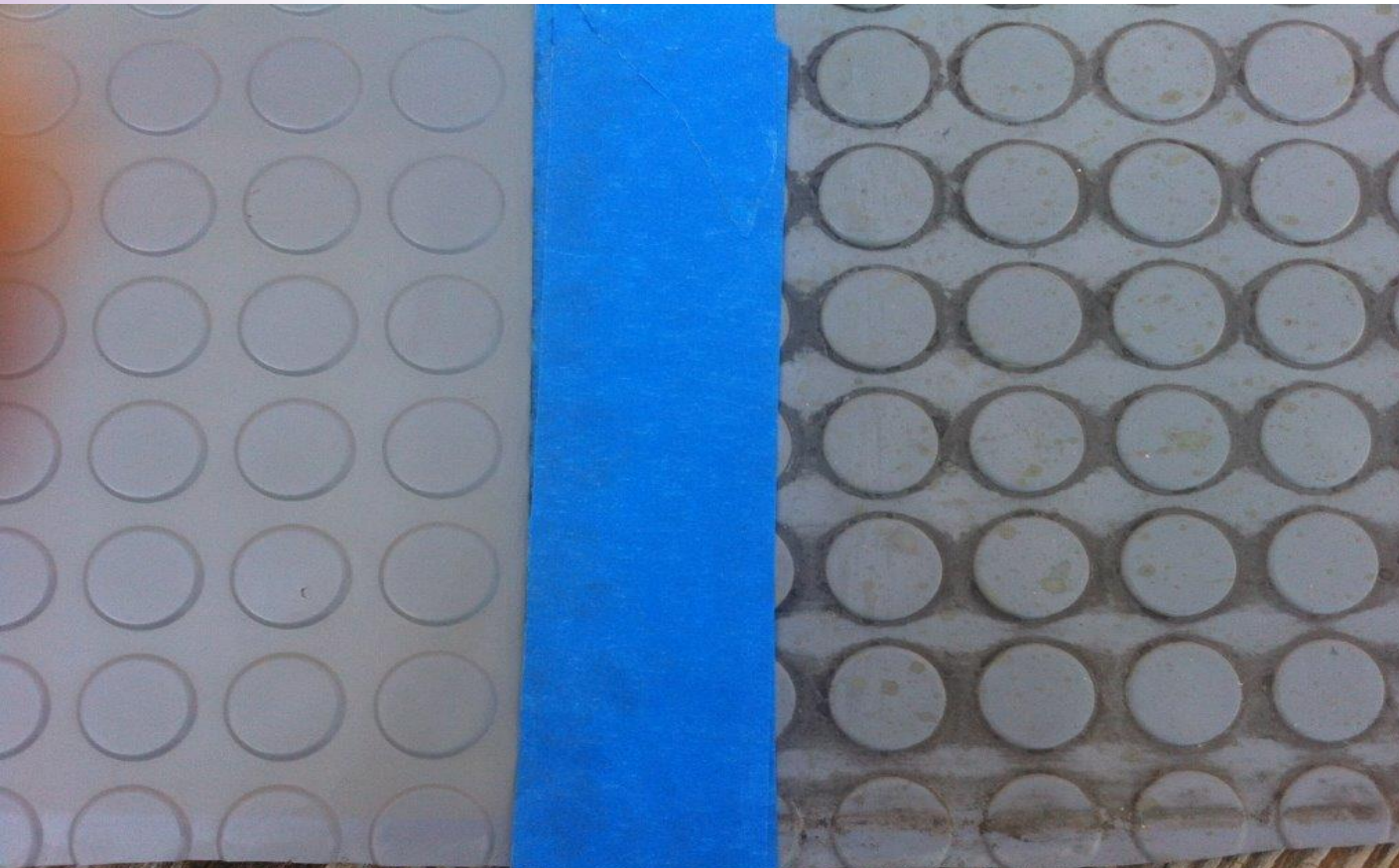
Rubber Floors



Split! Dynamic Cleaning

Restoration Cleaning

Rubber Floors



***Split!* Restorative Cleaner**

Restoration Cleaning

NO – Wax Floor



Split! Restorative Cleaner

Laundry Spotting and Soaking

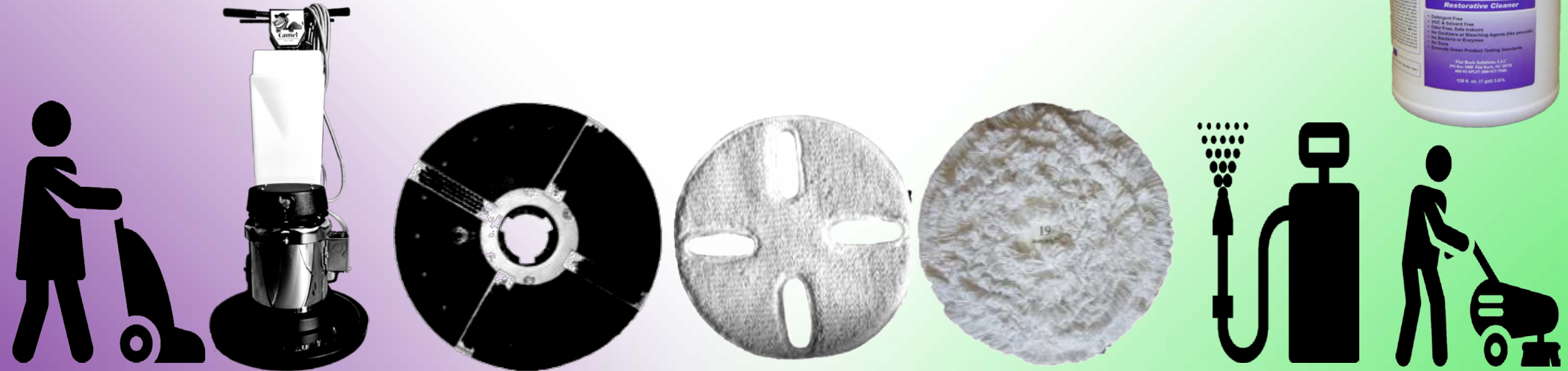


- Oil and grease stains
- Make-up stains
- Blood stains
- Food stains
- Odor removal
- Detergent residue
- Spot spray liberally and let dwell
- Use in an overnight barrel soak
- Use in an overnight machine soak



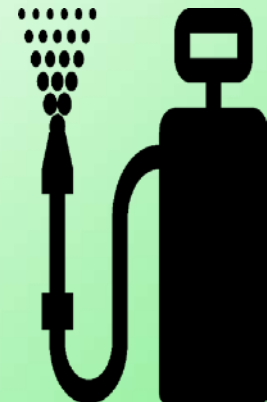
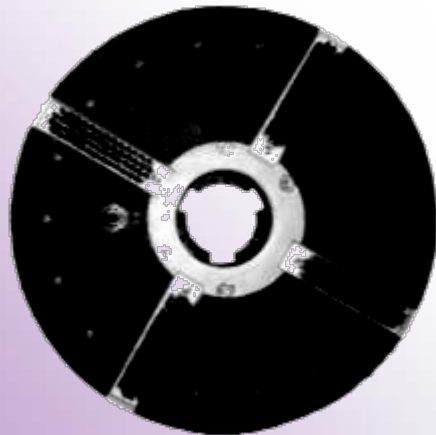
Split! Cleaning Process – Restorative Carpet Cleaning

Equipment Needed: Industrial Vacuum, Floor Machine, Bonnet Cleaning Pad and Driver...preferably a Bonnet N' Brush system, Bonnet Wiping Pad/Or: Pump Up Sprayer and Carpet Extractor.



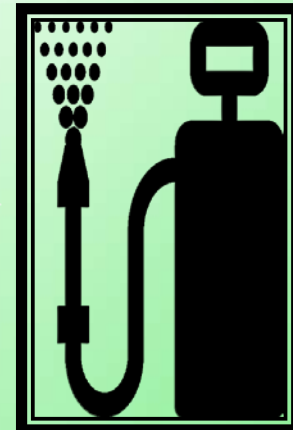
Split! Cleaning Process – Restorative Carpet Cleaning

Vacuum First! Always remove as much dry soil as you can with a dry cleaning system to avoid making unnecessary “Mud” while wet cleaning. Vacuum all edges.



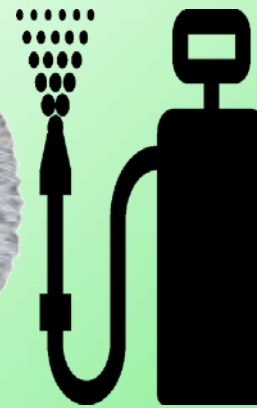
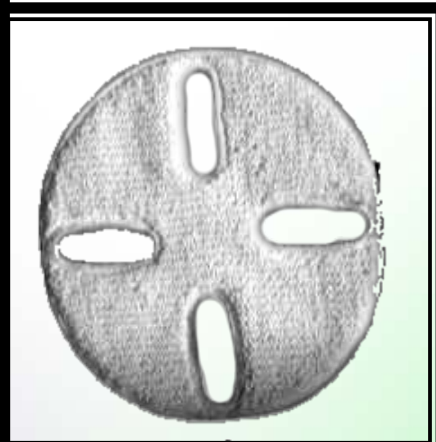
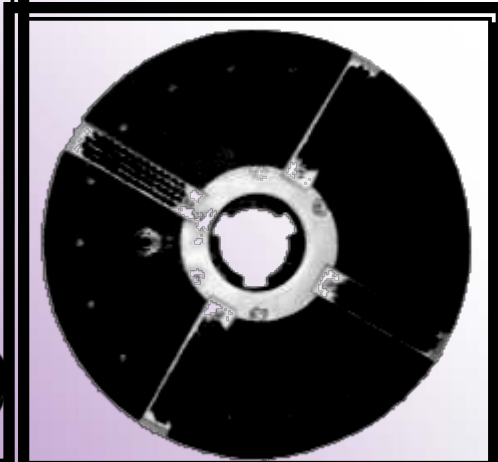
Split! Cleaning Process – Restorative Carpet Cleaning

Pre-spray – using *Split!* Restorative (Purple Label) at 12-16 oz. per gallon. Spray in a light, even spray pattern. Remember – this is low moisture cleaning! Let dwell for 5 minutes.



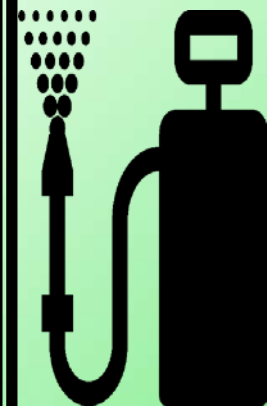
Split! Cleaning Process – Restorative Carpet Cleaning

Agitate carpet with a carpet bonnet system or an extractor brush system using just clear water in the extractor. Repeat process until you can see the carpet is free from the visual soil. Pre-spray again the area to be re-extracted.



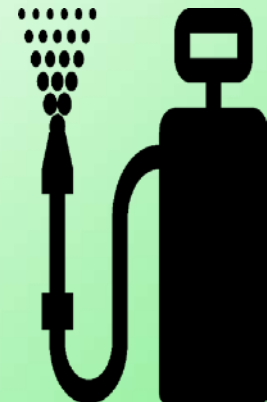
Split! Cleaning Process – Restorative Carpet Cleaning

Extract the “Splitted!” soil by using a wiping bonnet or a carpet extraction system. Repeat process if necessary.



Split! Cleaning Process – Restorative Carpet Cleaning

Vacuum to remove any small amounts of "*Split!*" material or to align the carpet nap. This vacuuming can be done on your next vacuuming cycle.



Split! Cleaning Process – Restorative Carpet Cleaning

Carry with you a Split! Restorative RTU (Ready to Use) Quart bottle and sprayer along with some microfiber cleaning cloths for spot cleaning. Always use proper PPE (Personal Protective Equipment) and floor signage.



Split! Cleaning Process – Restorative Tile, Grout and Hard Floor Cleaning

Equipment Needed: Industrial Wet Vacuum, Floor Machine or Auto-Scrubber, Rotary Brush for the Floor Machine, Floor Squeegee, Mop Bucket and Mop with Handle, Air Mover for drying.



Split! Cleaning Process – Restorative Tile, Grout and Hard Floor Cleaning

Half flood a grouted tile floor with *Split!* Restorative. Let dwell for 5 minutes. Use a floor machine and an appropriate rotary brush to scrub the floor thoroughly. If you will notice foam along with the soil on floor while scrubbing, this is the residue from previous detergent cleanings, Splitting! from the surface.



Split! Cleaning Process – Restorative Tile, Grout and Hard Floor Cleaning

Squeegee the *Split!* material to the drain and then wet vacuum the remaining liquid on the floor. Repeat process until detergent residue and soil has been removed. Make sure you detail corners and lower wall areas.



Split! Cleaning Process – Restorative Tile, Grout and Hard Floor Cleaning

Rinse mop floor with clean water. Use an air mover or floor fan to dry the floor. Make sure you stage floor signage for safety.



Split! Cleaning Process – Restorative VCT and other Hard Floor Cleaning

Use an auto-scrubber or floor machine applying *Split!* to the floor, and then using a double scrub process before picking up the Splitted liquid, allowing dwell time and agitation to help with the cleaning process.



Split! Cleaning Process – Restorative VCT and other Hard Floor Cleaning

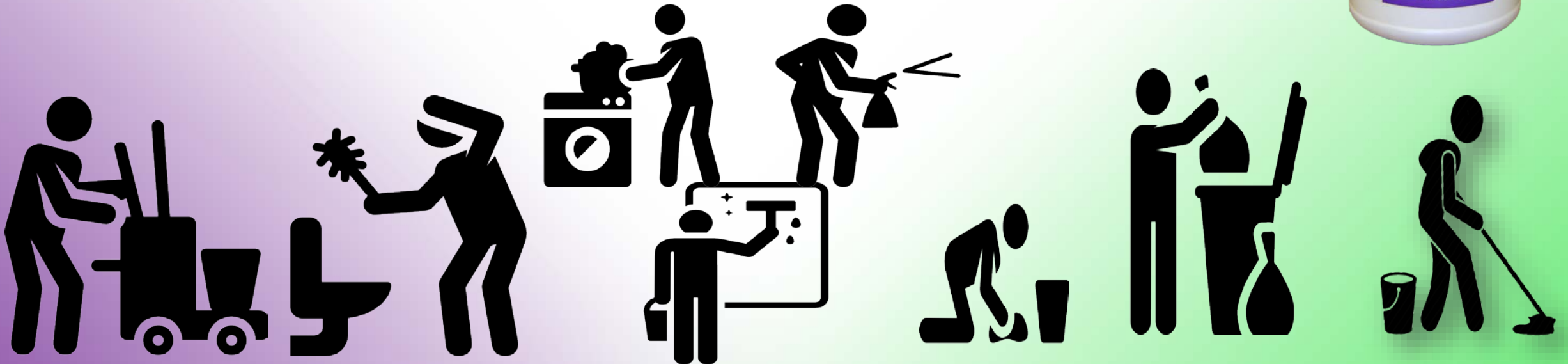
Use an appropriate brush or pad for the floor type and cleaning need. Pick up all the splitted liquid with a wet vacuum system before it has the opportunity to starting drying. Do a rinse cleaning path with water only.



Split! Cleaning Process – Restorative

Other uses for Restorative

Restorative makes for a fantastic heavy duty spray and wipe at multiple dilutions. We always recommend when cleaning stubborn soils and removing odors at a higher dilution, to rinse or re-wipe the surface being cleaned with a clean cloth or micro-fiber. Look on bicravenreps.com or splitcleaning.com for more directions.



Split! Non-Detergent Cleaner

Non-Detergent Daily Cleaner

Use as an every day spray & wipe

- Office Cleaning
- Restroom Cleaning
- Complete classroom solution
- Shop Degreasing
- Health Care

Use as an every day wet mopping cleaner

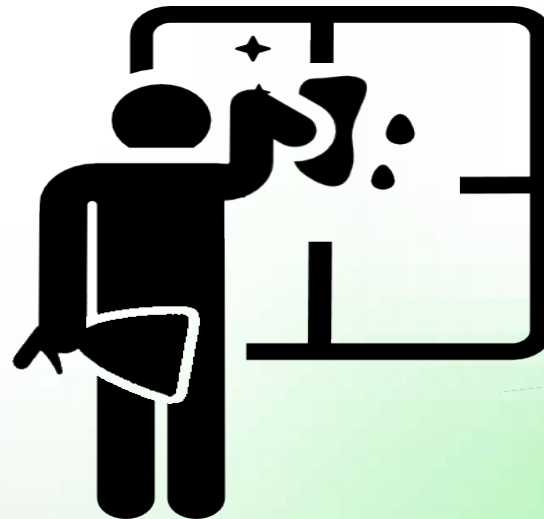
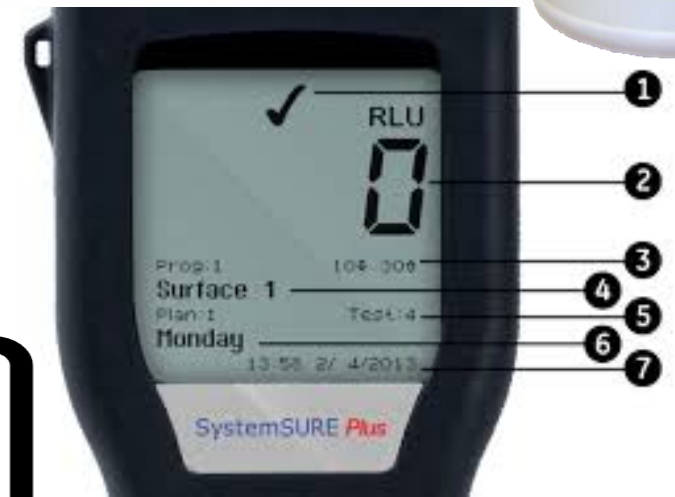
- VCT
- Restroom and Kitchen grouted tile
- Hard Floors
- Finished wood floors(gymnasiums)
- Auto-scrubbing



Split! Non-Detergent Cleaner

Removing Bio-Film

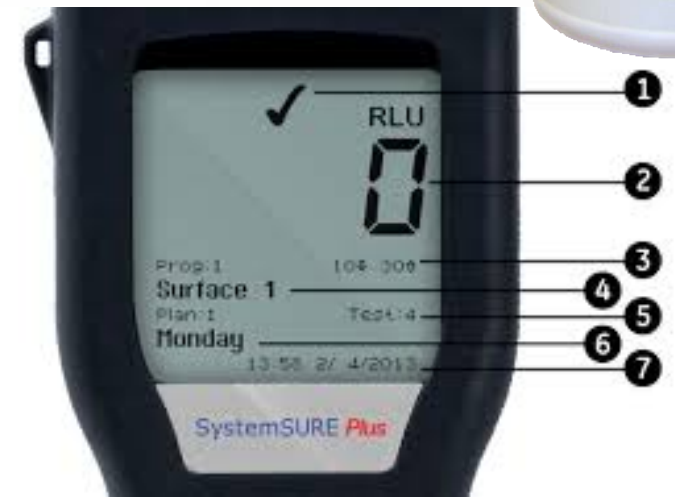
- Spray and wipe surfaces at 2 to 4 oz. per gallon.
- Use a microfiber or lint free cleaning cloth for best results.
- No waiting time like a disinfectant; just spray and then wipe.
- Strong enough to remove tough soils
- Safe on all surfaces that can be cleaned with water.



Split! Non-Detergent Cleaner

Restroom Cleaning

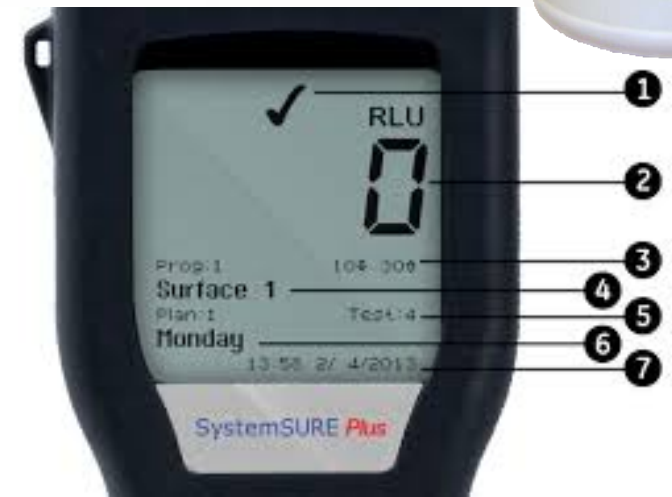
- Spray and wipe all surfaces using a microfiber cleaning cloth.
- Make sure to allow dwell time for toilets, sinks and for stubborn soils, cleaning with necessary tools and brushes.
- Clean glass surfaces and re-wipe with a clean cloth to remove any streaks
- Mop or auto-scrub at 2 to 4 oz. per gallon.
- Safe on all surfaces that can be cleaned with water.



Split! Non-Detergent Cleaner

Cleaning Hard Floors

- Mop or auto-scrub at 2 to 4 oz. per gallon.
- Clean VCT, synthetic flooring or rubber floors, composite flooring, finished water or concrete or any floor surface that is safe to clean with water
- Double scrub stubborn dirt.
- Use appropriate pads or brushes.



Split! Carpet & Upholstery Cleaner

Non-Detergent Carpet & Upholstery

Use as an every day carpet cleaning solution

- Carpet extraction
- Carpet bonnet cleaning with the Camel
- Carpet bonnet cleaning with a 175 RPM FM
- Nylon based rolled carpet
- Carpet Squares
- Natural Fiber

Use as an every day upholstery cleaning solution

- Use as a Pre-Spray with cold water extraction
- Safe on all types of fabrics

Use as an every day spotting cleaning solution

- Use as a spray bottle and pump up spotting solution
- Safe on all types of carpets and fabrics



Split! Carpet & Upholstery Cleaner

Carpet & Upholstery Cleaning-Equipment Needed

Industrial Vacuum, Qt. spray bottle with *Split!* and microfibers, pump-up sprayer; For extraction cleaning...a machine than has brushes or rollers is preferable for better agitation; a single disc 175 RPM floor machine or a Camel preferably using a Bonnet N' Brush system with wiping bonnets.



Split! Carpet & Upholstery Cleaner

Carpet Cleaning

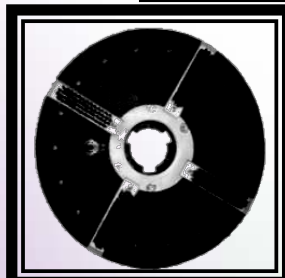
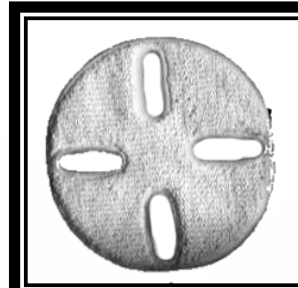
Vacuum thoroughly first. Use the Camel built in spraying system or use a pump up sprayer to finely spray the carpet with a dilution of Split! Blue at 6 to 12 oz. per gallon depending on the soil level and residue issue with the carpet. Let dwell for 5 minutes.



Split! Carpet & Upholstery Cleaner

Carpet Cleaning

Agitate carpet with a carpet bonnet system or an extractor brush system using just clear water in the extractor. Repeat process until you can see the carpet is free from the visual soil. Pre-spray again the area to be re-extracted.



Split! Carpet & Upholstery Cleaner

Carpet Cleaning

Extract *Split!* Material with a carpet extractor brush system or if using the bonnet system, use a cotton wiping bonnet. Repeat over areas as needed.



Split! Carpet & Upholstery Cleaner

Upholstery Cleaning

Use a Microfiber Cloth or lint free cloth, spraying lightly on the surface to be cleaned. Agitate with the microfiber cloth and wipe off with a clean microfiber. If using an upholstery machine, Use the quart spray containing *Split!*, spraying lightly on the surface and extract with your upholstery using water only.



Split! Carpet & Upholstery Cleaner

Spot Cleaning

Use a Microfiber Cloth or lint free cloth, spraying the surface to be cleaned with either *Split!* Blue or Purple. Agitate with the microfiber cloth and wipe off with a clean microfiber. If using an upholstery machine, Use the quart spray containing *Split!*, spraying *Split!* on the surface and extract with your upholstery using water only. Dilutions can vary up to 16 ounces per gallon depending on cleaning need.



Camel

Low Moisture Cleaning Machine

Combined with our non-detergent **Split!** cleaners and our **Split!** two pad system will outperform any other carpet chemical and delivery systems in side-by-side testing. Ideal for carpet and hard floors. Made in USA.

Ergonomic dual steel operating and spraying triggers for left or right handed operation. Simply squeeze both triggers to activate the electric sprayer!

Low 65 decibel operation, no odor cleaning, carpets dry in 15 min!

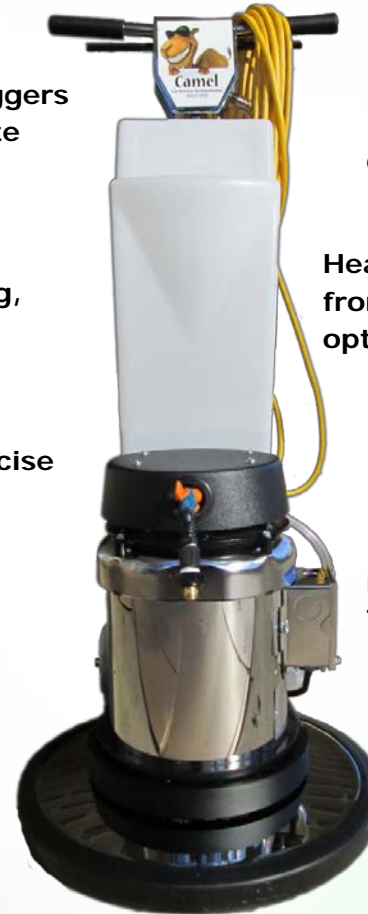
Front mounted machine sprayer for precise solution application.

Unique circular spray pattern provides complete coverage without wetting baseboards, walls or furniture.

Non-Marking
Wheels

Variable position lock handle conveniently positioned for ergonomic ease, no bending!

Thumb operated safety switch



Extra heavy duty spring steel cord strain relief.

Heavy duty spill proof solution tank for front mount sprayer or center-feed options.

Reduced amp draw and current usage, 9 amps vs. 15 in comparable units.

180 Frame 1.5 hp motor, much stronger than conventional 1.5 hp motors.

Totally enclosed, fan-cooled for longer motor life.

Complete Chrome Covers

Provides more downward pressure than competitive models, weighs 126 lb empty!

**UL/CUL
Approved**



MACHINE SPECIFICATIONS

Part #	120099
Brush Diameter	17"
Brush Speed	165 RPM
Motor	1.5 HP TEFC 180 Frame
Gear System	Planetary 3-Idler Severe Duty - Hardened Gears with Steel Gear Box Coupler
Power Cable	50 ft
Weight	126 lbs
Warranty	3 years parts, 1 year labor

Split! Non-Detergent Cleaning Products

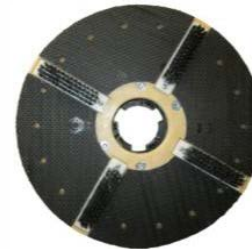


With **Split!** Non-Detergent cleaning products and your **Camel** Low-Moisture floor machine, there is no job too difficult. Our unique **Split!** Non-Detergent cleaning products are incredibly powerful yet they contain no solvents, no VOCs, no oxidizing agents (like hydrogen peroxide), and no odor!

Camel

Low Moisture Cleaning Machine

Camel Accessories



Unique Brush & Bonnet Pad Driver for maximum. low-moisture cleaning results. Provides the perfect amounts of agitation and moisture needed to split stubborn soils, stains and detergent residues.



Slotted Cleaning pad for the first of two steps. Synthetic blend to split/clean the soil, yet not absorb the split material. Has slots to allow brushes from driver to agitate soil.



Cotton Wiping pad for the second step. Cotton blend designed to absorb split material as it dries the carpet fibers. Over-sized to allow wiping of baseboards, etc. .



Clean Grit Brush with multi-level bristles to get down into grout as it scrubs the floor. Fine bristles work well in small and large grout lines.

Split! Not just a Product, but a Program!



Split offers Training and Training tools for DSR's and End Users

- DSR on site training and help
- Manufacturer Rep end user support
- **Split!** inside end user customer support
- Classroom **Split!** training and **Split!** seminars
- Training Tools – Evolving website loaded with information
- Training Tools - Cleaning Procedures
- Training Tools – Wall Charts
- Training Tools – Training Cards
- Training Tools – Videos Coming
- Training Tools – End User Customization



Carpet Cleaning Procedures



Split! Cleaning Procedures

Split! Not just a product, but a program!

Carpet Cleaning Instructions:

1. Vacuum carpet to remove debris.
2. Dilute [Split! Carpet and Upholstery Cleaner](#) 12oz per gallon cold water in the tank of The Camel Low-Moisture Carpet machine.
3. For heavy soil or residue, you may use [Split! Restorative Cleaner](#) for the first cleaning, then Split! Carpet and Upholstery cleaner in the future.
4. *Split!* the Soil: Equip The Camel with the *Split!* Brush-N-Bonnet pad driver with a slotted bonnet.
5. Pre-spray bonnet with solution until damp.
6. Spray solution as you walk forward and side-to-side into soiled areas.
7. Retreat back the same pass, scrubbing again. Repeat the forward path, spraying solution and scrubbing as you go, and return.
8. You may repeat this procedure up to 3 times for heavily soiled carpet. Spray generously for traffic patterns and heavily soiled areas, but spray very lightly on drink spills!
9. Wipe it Up: Before the area cleaned can dry, use our 100% cotton wiping pads on the floor machine to absorb the now released soil.
10. Equipment Substitutions and Alternative Methods
 11. If you do not have The Camel, you may use a standard 175 rpm floor machine for low-moisture cleaning. Dilute [Split! Carpet and Upholstery Cleaner](#) 12oz per gallon of cold water in an electric or pump-up tank sprayer to be used as a pre-spray.
 12. Equip the floor machine with the *Split!* Brush-n-Bonnet pad driver with slotted bonnet OR use a scrubbing bonnet (with scrub strips).
 13. Dampen bonnet, then evenly spray only as much carpet as you can scrub with the floor machine before it dries.
 14. Continue as above, ending by replacing the damp pad with dry 100% cotton wiping bonnets to "dry extract" the cleaning solution and soil.
 15. [Split! Carpet and Upholstery Cleaner](#) may be used with other low-moisture equipment, carpet extractors and bonnet systems. For use in carpet extractors, dilute *Split!* at 3-4 oz per gallon of cold water in tank.
 16. Solution feed systems are not recommended.

Note: When first transitioning from detergent-based cleaning to non-detergent cleaning, you may experience "suds" in the carpet being cleaned. This is residue from previous detergent cleanings. If large volumes are present, you may consider wet extraction after scrubbing instead of dry extraction with bonnets. You will then proceed to low-moisture cleaning after that.





Split! Wall Chart


Split! Not just a product, but a program!





Wall Chart Restroom Cleaning


- 


Remove large debris such as paper from restroom floor. Remove the filled trash liner from the trash dispenser. Remove any feminine napkin trash liners and replace.
- 


Dust mop restroom floor with a 24" microfiber dust mop system (floor tool, handle and dust mop).
- 


Have available **Split! Non-Detergent Cleaner** diluted at 16 oz. per gallon in a spray bottle and the same **Split!** product with the same dilution in a mop bucket to mop and clean the floors.
- 


Have available microfiber cloths for spray a wipe cleaning and a microfiber floor tool with microfiber cleaning pads for mopping along with the filled bucket mentioned above.
- 


Spray sinks, urinals, and toilets with **Split!** and let dwell for 5 minutes.
- 


Spray/clean doors, partitions, outside of dispensers, hand dryers and any other touch points in the restroom.
- 

Clean sinks, urinals and toilets respraying areas that might of dried already. (Be aware of rust and other difficult hard water stains in toilets and urinals that may still need an acid based bowl cleaner to remove those stains.). Use a bowl brush in toilets to remove any stubborn stains.
- 

You may use other cleaning tools such nylon brushes or green hand pads depending on the surface. Always follow the "Finest First" rule, which is using the less aggressive and safest method to clean the surface without damaging it.
- 

Clean mirrors and polish with a dry microfiber. Dry off sinks, urinals, toilets and dispensers with microfiber cloths where needed.
- 



Replace and fill paper product dispensers and hand soap dispensers.
- 



Check - to see if all work above is completed correctly.
- 

Finish by wet mopping the floor with **Split! Non-Detergent Cleaner** in a mop bucket with microfiber mops or a microfiber flat mop system. Leave wet floor signs up until dry.

Split! Training Cards

Split! Not just a product, but a program!

 		
Cleaning Tasks:	Split!	Application Method
Pick up paper and any debris on floor and throw in trash. Use proper PPE and signage.		
Replace trash liners. Place trash in utility cart for disposal.		
Spray and wipe trash cans with Split! in a spray bottle with a microfiber cloth.	Split! Non-Detergent	Microfiber Cloth-S/Btl.
Dust vents with a microfiber dusting tool or microfiber cloth.		Microfiber Dusting Tool
Spot Clean vents with Split! Non-Detergent Cleaner as needed.	Split! Non-Detergent	Microfiber Cloth-S/Btl.
Dust vertical surfaces and desks where needed with a microfiber dusting tool or microfiber cloth.		Microfiber Dusting Tool
Clean desks, touch areas and vertical surfaces using Split! in a spray bottle.	Split! Non-Detergent	Microfiber Cloth-S/Btl.
Spot Clean glass and mirrors with Split! and a microfiber cloth.	Split! Non-Detergent	Microfiber Cloth-S/Btl.
Go back over any glass or mirrors that are still smudged with a dry microfiber.		Microfiber Cloth-Dry
Vacuum carpet and hard floors with a backpack vacuum or an upright vacuum.		Backpack/Upright Vacuum
Spot mop any hard surface floor areas with Split! diluted 4 oz per gallon.	Split! Non-Detergent	Microfiber floor tool/bucket
Spot Clean carpet with Split! Follow spot cleaning for carpets procedures.	Split! Carpet and Upholstery	Microfiber Cloth-S/Btl.
Equipment Needed:	Notes:	
Always wear appropriate Personal Protective Equipment. Display wet floor signs where needed. <ul style="list-style-type: none"> Microfiber Cloths-wet cleaning Microfiber floor tool and bucket Microfiber Cloths-dry cleaning Bottles&Trigger Sprayers Microfiber Dusting Tools Labels For hard to reach areas use proper safe Split! Carpet and Upholstery equipment with extension poles Non Detergent Cleaner Backpack/Upright Vacuum 	Display wet floor signs where needed. <ul style="list-style-type: none"> Quart Bottle Split! Split! Can Liners 	Note - Keep wet floor signs in place until the floor is dry. Note - for more stubborn cleaning areas, use Split! Restorative Cleaner in place of the Non-Detergent Cleaner . Follow directions from other training documents for the cleaning procedures. If you can remove dry dirt first with a dry cleaning system, wet cleaning will be much easier and faster.

 		
Cleaning Tasks:	Split!	Application Method
Pick up paper and any debris on floor and throw in trash. Use proper PPE and signage.		
Refill paper products dispensers and hand soap dispensers where applicable.		
Replace trash liners. Place trash in utility cart for disposal.		Microfiber Cloth-S/Btl.
Spray and wipe trash cans with Split!	Split! Non-Detergent	Microfiber Dusting Tool
Dust vents with a microfiber dusting tool or microfiber cloth.		Microfiber Cloth-S/Btl.
Spot Clean vents with Split! Non-Detergent Cleaner as needed.	Split! Non-Detergent	Microfiber Dusting Tool
Dust vertical surfaces and desks where needed with a microfiber dusting tool or microfiber cloth.		Microfiber Dusting Tool
Clean desks, touch areas and vertical surfaces using Split! in a spray bottle.	Split! Non-Detergent	Microfiber Cloth-S/Btl.
Spot Clean glass and mirrors with Split! and a microfiber cloth.	Split! Non-Detergent	Microfiber Cloth-S/Btl.
Go back over any glass or mirrors that are still smudged with a dry microfiber.		Microfiber Cloth-Dry
Vacuum carpet and hard floors with a backpack vacuum or an upright vacuum.		Backpack/Upright Vacuum
Spot mop any hard surface floor areas with Split! diluted 4 oz per gallon.	Split! Non-Detergent	Microfiber floor tool/bucket
Spot Clean carpet with Split! Follow spot cleaning for carpets procedures.	Split! Carpet&Upholstery	Microfiber Cloth-S/Btl.
Equipment Needed:	Notes:	
Always wear appropriate Personal Protective Equipment. Display wet floor signs until floor dries. <ul style="list-style-type: none"> Microfiber Cloths-wet cleaning floor tool and bucket Microfiber Cloths-dry cleaning Bottles&Trigger Sprayers Microfiber Dusting Tools For hard to reach areas use proper safe Split! Carpet and Upholstery equipment with extension poles Non Detergent Cleaner Backpack/Upright Vacuum products,Liners,Hand Soap 	Display wet floor signs until floor dries. <ul style="list-style-type: none"> Microfiber Quart Bottle Labels Split! Paper 	Note - Keep wet floor signs in place until floor is dry. Note - To clean whiteboards and blackboards, use Split! Restorative Cleaner in a spray bottle diluted 16 oz per gallon or a 10 quart bucket, same dilution. Clean with a microfiber cloth. Have dry microfibers available to dry surface after cleaning. Note - for more stubborn cleaning areas, use Split! Restorative Cleaner in place of the Non-detergent cleaner. Follow directions from other training documents for the cleaning procedures.

Split! Not just a product, but a program

<https://www.bicravenreps.com> or <https://www.splitcleaning.com/>



Home

Products

Equipment

Info

Training

About & Contact



Split! Restorative Cleaner

This letter of continuing guarantee certifies:
Split! Restorative Cleaner is safe and effective for general cleaning of all surfaces in food processing plants (including USDA inspected facilities) and foodservice facilities when used as directed. There are no use limitations for this product other than it should not come in contact with food and is not to be used in excess of its functional purpose.

[Click Here for Complete Information](#)

***Split!* Basic Training Test**

1) *Split!* splits the soil and residue on a surface by:

- a) Dwelling on the soil and residue until it splits.**
- b) Quietly waiting until the soil and residue isn't looking and then jumping on top of it.**
- c) Dwelling on the soil and residue and then agitating the surface to be cleaned so the soil and residue splits.**
- d) Sending signals into outer space telling where the soil and residue is; then a bolt of electricity hits the soil and residue and splits it.**



2) What happens to the splitted soil and residue?

- a) It disappears from the face of the earth, never to be seen again.
- b) It becomes microscopic particles, the parts of what the soil and residue are made of; never going back to the its original state.
- c) It turns into what it was originally, like a cup of coffee or a soda, if that is what you are cleaning up.

3) How do you pick up the splitted material?

- a) Depending on the task you are doing, you need to find a shovel that will match the size of the soil and residue being picked up. Example – a backhoe for very large jobs.
- b) Depending on the task you are doing, and how lazy you are, you may just choose to leave it there and have others grind it back into and onto the cleaning surface.
- c) Depending on the task you are doing; for carpet extracting it with a machine or a wiping bonnet; hard floors – a wet vacuum or an automatic scrubber; or horizontal and vertical surfaces – using a spray and wipe method and having a second clean wiping cloth available, depending on the soil load.



4) What causes residue on surfaces?

- a) Detergents that are left over on the surface being cleaned, and not picking it up properly during the cleaning task.
- b) When you are not looking, gnomes sneak into your buildings in the middle of the night, and spray residue all over your building's floors and fixtures.
- c) Detergents that are left over on the surface being cleaned, drying on the surface, leaving a residue.

5) What is the problem with residue caused by detergent based cleaners?

- a) It attracts relatives, that stay at your house too long, and eat all of your food.
- b) It attracts soil to the surface where you just cleaned, and creates a buildup, while your surfaces are getting dirtier faster.
- c) It attracts soil and bacteria to the surface where you just cleaned, creating buildup of soil and a feeding ground for bacteria.



6) What is ATP - Adenosine Triphosphate?

- a) A movie on Netflix rated R: Not for Children.
- b) The scraping from a frog's tongue.
- c) A new Hollywood Independent Film Festival where the winner receives enough *Split!* for use in their home for one year.
- d) The universal energy molecule in cells, those that are or were recently living.

7) What are the three *Split!* products?

- a) Restorative One, Restorative Two and Restorative Three. We just like to say Restorative because it sounds cool.
- b) Restorative, Non-Detergent, and Flame Thrower.
- c) Restorative, Non- Detergent and Carpet and Upholstery Cleaner.

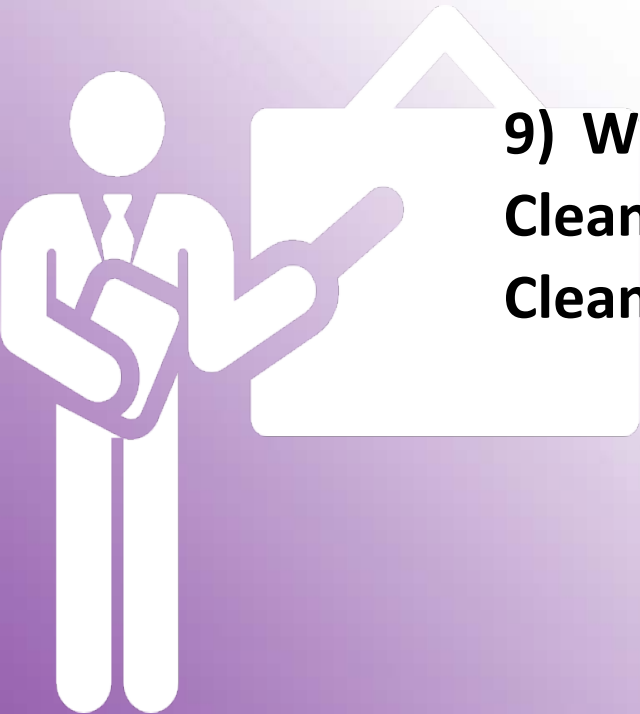


8) When do you use the Restorative (Purple label) Cleaner?

- a) When it is the first bottle you can find in your custodial closet.
- b) When you hear it yelling at you from down the hall, and it is easier to just use it, then listen to it whine all day.
- c) On all surfaces to be cleaned, regardless of what the task is or how large the soil load is. You can use it on all surfaces, as long as the surface is water safe.
- d) On tougher built up areas that need restoration, or soils that have built up over time. You can use on all surfaces, as long as the surface is water safe.

9) When do you use the Non- Detergent (Green label) Cleaner and the Carpet and Upholstery (Blue label) Cleaner?

- a) Whenever you run out of one of the other *Split!* products.
- b) Depending on if you're feeling green or just a little blue that day.
- c) Green is for every day cleaning of hard surfaces and floors; Blue is for everyday cleaning and spotting of carpet and upholstery.



10) Why use non-detergent cleaners?

- a) They remove very stubborn soils.
- b) They remove very stubborn soils and bio-film. It is Green.
- c) My boss told me to, so.....I better use it.
- d) They remove very stubborn soils, biofilm and all residue; and they do not leave any residue. This leaves a surface that will stay cleaner longer and be free from bio-film right after the initial cleaning. It is Green and very safe for the user and the buildings health.



Thank you for participating in *Split!* training!



Split!