



Carpet Cleaning Training Card

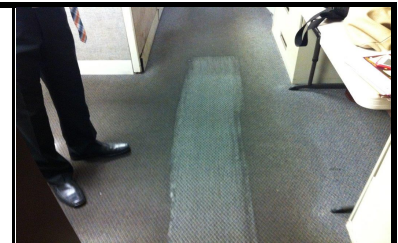


Cleaning Tasks:	Split!	Application Method
Remove furnishings and other items from the area to be cleaned.		
Pick up large debris and loose paper on the floor. Remove gum and staples.		
Vacuum the carpet thoroughly using a backpack vacuum or a dual motor vac.		B-Pack/Upright Vac.
Setup the your floor machine or extraction machine to bonnet clean or extract	Split! Carpet & Upholstery	Pre-spray 8 oz. per gal
Wet bonnet on the bonnet brush with diluted Split! and install on machine.		Bonnet & Brush System
Pre-spray carpet with Camel or pump-up then clean with your machine.	Split! Carpet & Upholstery	Pre-spray-8 oz. per gal
Flip and exchange bonnets when needed.		Slotted Cleaning Pad
Place the drying bonnet under the machine;dry extract carpet or wet extract		Cotton Wiping Pad
Flip and exchange bonnet when needed.		Cotton Wiping Pad
Vacuum cleaned area when dry to remove any other loose split soil.		B-Pack/Upright Vac.
Vacuuming can be done the next day if you do not have time.		

Equipment Needed:	Notes:
<p>Always wear appropriate Personal Protective Equipment.</p> <ul style="list-style-type: none"> • Back Pack or Upright 2-Motor Vacuum • Standard Floor Machine or Extractor • Bonnet and Brush System • Cotton Wiping Pads • Microfiber Cloths 	<p>Display wet floor signs until carpet dries.</p> <ul style="list-style-type: none"> • 10 Quart Bucket • 2 Cup Measuring Cup • Putty Knife • Tool to Remove Staples • Split! Carpet Cleaner <p>Split! Carpet and Upholstery Cleaner may be used with other low-moisture equipment, carpet extractors and bonnet systems. Use same dilutions. Use clear water in extractor tank. For in-tank use in carpet extractors, dilute Split! at 3-4 oz per gallon of cold water in tank.</p>



Carpet Restorative Training Card



Cleaning Tasks:	Split!	Application Method
Remove furnishings and other items from the area to be cleaned.		
Pick up large debris and loose paper on the floor. Remove gum and staples.		
Vacuum the carpet thoroughly using a backpack vacuum or a dual motor vac.		B-Pack/Upright Vac.
Setup the Floor machine using Split! Carpet Cleaner.	Split! Restorative	Pump-up-12-16 oz.per gal
Wet bonnet on the bonnet brush with diluted Split! and install on machine.		Bonnet & Brush System
Pre-spray carpet with pump-up sprayer then clean with your machine.	Split! Restorative	Pump-up-12-16 oz.per gal
Flip and exchange bonnets when needed. Clean area up to 3 times.		Slotted Cleaning Pad
Place the drying bonnet under the machine and dry extract carpet.		Cotton Wiping Pad
Flip and exchange bonnet when needed.		Cotton Wiping Pad
Vacuum cleaned area when dry to remove any other loose split soil.		B-Pack/Upright Vac.
Vacuuming can be done the next day if you do not have time.		

Equipment Needed:	Notes:
<p>Always wear appropriate Personal Protective Equipment.</p> <ul style="list-style-type: none"> • Back Pack or 2-Motor Upright Vacuum • Camel, or Standard Floor Machine • Bonnet and Brush System • Cotton Wiping Pads • Microfiber Cloths 	<p>Display wet floor signs until carpet dries.</p> <ul style="list-style-type: none"> • 10 Quart Bucket • 2 Cup Measuring Cup • Putty Knife • Tool to Remove Staples • Split! Restorative Cleaner <p>Split! Carpet and Upholstery Cleaner may be used with other low-moisture equipment, carpet extractors and bonnet systems. For use in carpet extractors, dilute Split! at 3-4 oz per gallon of cold water in tank.</p>