

split!

# Split!

**Discover the Secret  
Other Chemical Manufacturers  
Don't Want You to Know!  
To clean safer, smarter, and  
more effectively, you *MUST*  
clean without Detergents!**





**Split!**

- Detergent free
- VOC & solvent free
- No oxidizers/bleaching agents (like peroxide)
- No bacteria or enzymes
- Patented ingredients for removing germs and bio-film
- Exceeds green testing standards

## Non-Detergent Cleaning Explained:



- Conventional green cleaning products have been detergent-based.
- Detergents work by being sticky; they attract soil and hold onto it.
- Even when properly diluted, detergents leave behind a residue ON EVERY SURFACE they touch.
- This residue grabs soil from our shoes, wheels on carts, our hands, or anything else that touches the surface, which causes rapid re-soiling.
- Our revolutionary **Split!** Non-Detergent Cleaners contain no detergent at all.
- These industrial strength cleaners work not by sticking to soil, as detergents do, but by splitting the soil (all types of organic, non-solid molecules) into its smallest particles of matter, essentially blasting it into small enough bits that it can simply be wiped away.

# Cleaning For Health!

## Removing **ATP** - Adenosine Triphosphate

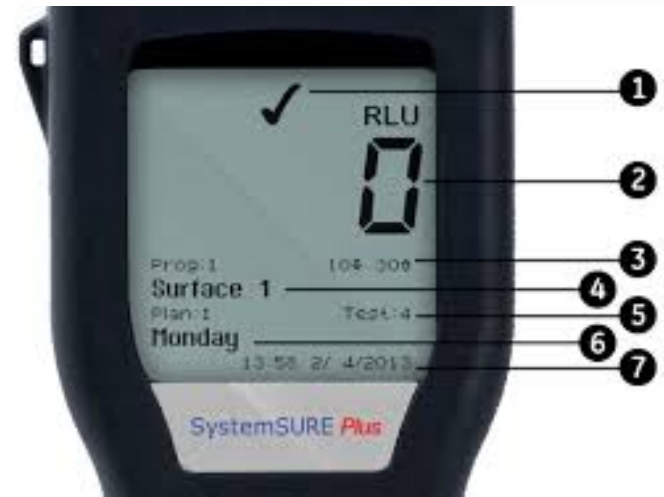
- ***Split!*** Non-Detergent Cleaners microscopically split all organic, non-solid molecules to pieces, on contact.
- Our patented ingredients for removal of ATP cannot be matched by any detergent disinfectant. Not even close.
- Infection Prevention experts now more fully understand the role of ATP in the transmission of nosocomial infections.
- A fundamental obstacle to our procedures for cleaning, sanitation, and infectious disease prevention, ATP is comprised of biological pollutants that are or were living.



# Cleaning For Health!

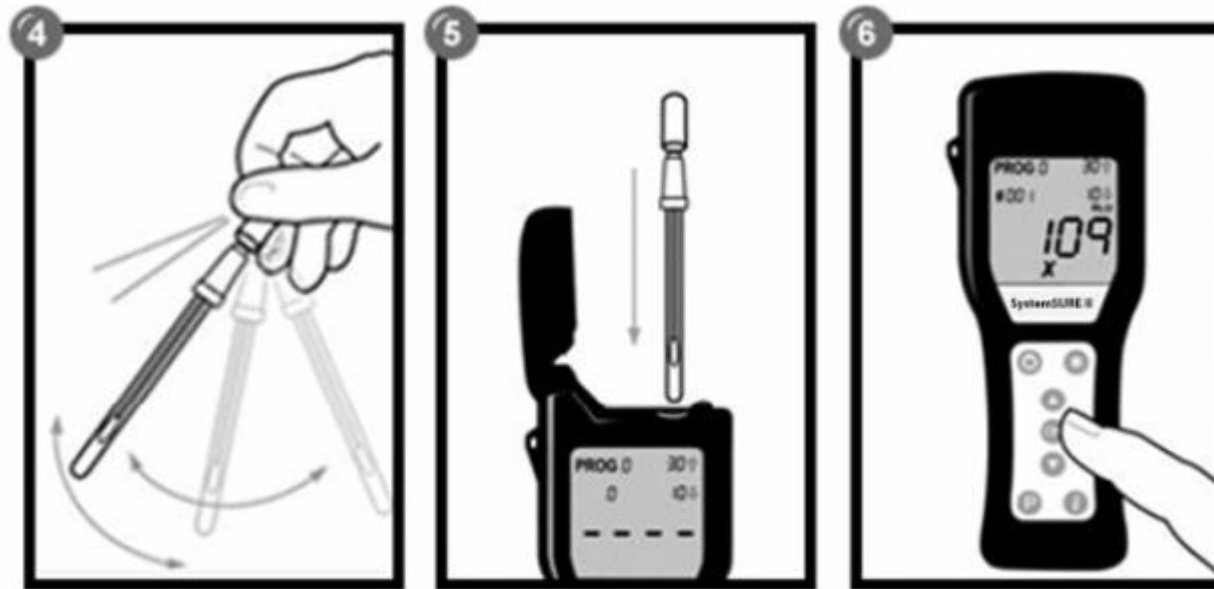
## Removing ATP - Adenosine Triphosphate

- Residue creates the ideal environment for germs to attach to a surface and thrive as a community.
- Even assuming detergent disinfectant procedures are killing 100% of the germs (which they are not) if we don't remove the ATP, their breeding grounds remain.
- Manufacturers of disinfectant detergents are aware of this, and say on their labels to use their products only on pre-cleaned surfaces.



# Cleaning For Health!

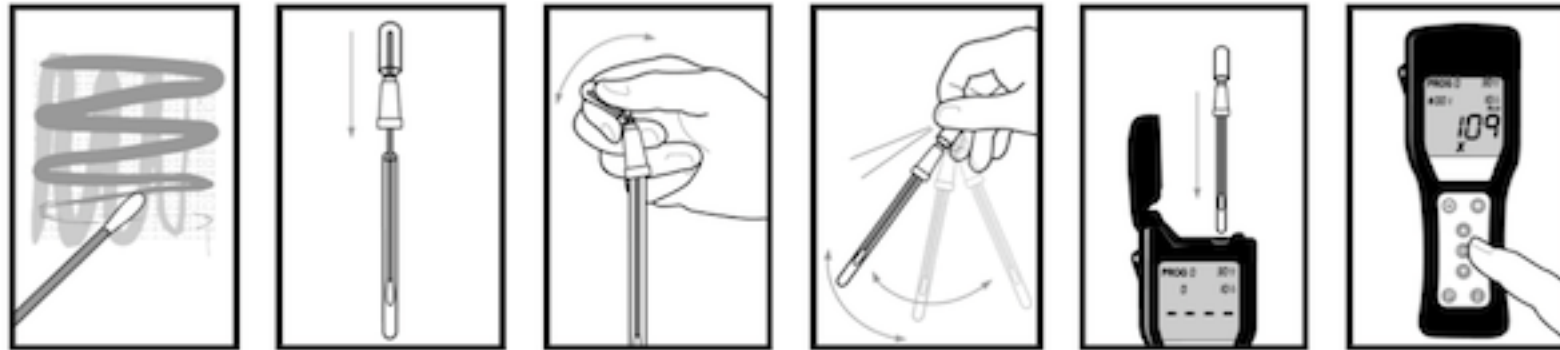
## Removing **ATP** - Adenosine Triphosphate



- We now have the real-time ability to measure **ATP** and its removal from touch points in public areas and hospital environments.

# Cleaning For Health!

## Removing **ATP** - Adenosine Triphosphate



- The System SURE *Plus* luminometer from Hygiena uses ATP technology to measure Adenosine Triphosphate, the universal energy molecule found in all living cells. Readings are measured in RLUs, Relative Light Units, in direct proportion to the amount of ATP present on a given surface or touch point.
- A reading of 0 to 10 indicates the surface as "pass"; 11 to 30 indicates "caution"; and 31 and above indicates "fail". Current detergent-based disinfectants and protocols may lower RLU readings to be somewhere close to 31. Split! Non-Detergent Cleaner lowers RLU readings to zero – on contact, virtually every time.





# Split! Restorative Cleaner

## Restoration Cleaning

- Carpet restoration
- Upholstery restorative cleaning
- Grouted Tile Floors
- Epoxy Floors
- Rubber Floors
- Synthetic Sports Floors
- Concrete Floors
- No-Wax Floors
- Finished Wood Floors
- Auto-Scrubbing Solution for restorative or stubborn dirt.
- Mopping solution for heavier dirt loads, front door entries, ice melt and wet walk in areas.
- Pool areas and locker room restoration



# Split! Restorative Cleaner

## Laundry Spotting and Soaking

- Oil and grease stains
- Make-up stains
- Blood stains
- Food stains
- Odor removal
- Detergent residue
- Spot spray liberally and let dwell
- Use in an overnight barrel soak
- Use in an overnight machine soak



*Split!* Restorative Cleaner  
Restoration Cleaning

Carpet



*Split!* Restorative Cleaner  
Restoration Cleaning



C  
A  
R  
P  
E  
T



***Split!* Restorative Cleaner**  
**Restoration Cleaning**



**Upholstery**



***Split!* Restorative Cleaner**

**Restoration Cleaning**

**Grouted Tile**



*Split!* Restorative Cleaner

Restoration Cleaning

Epoxy Floors

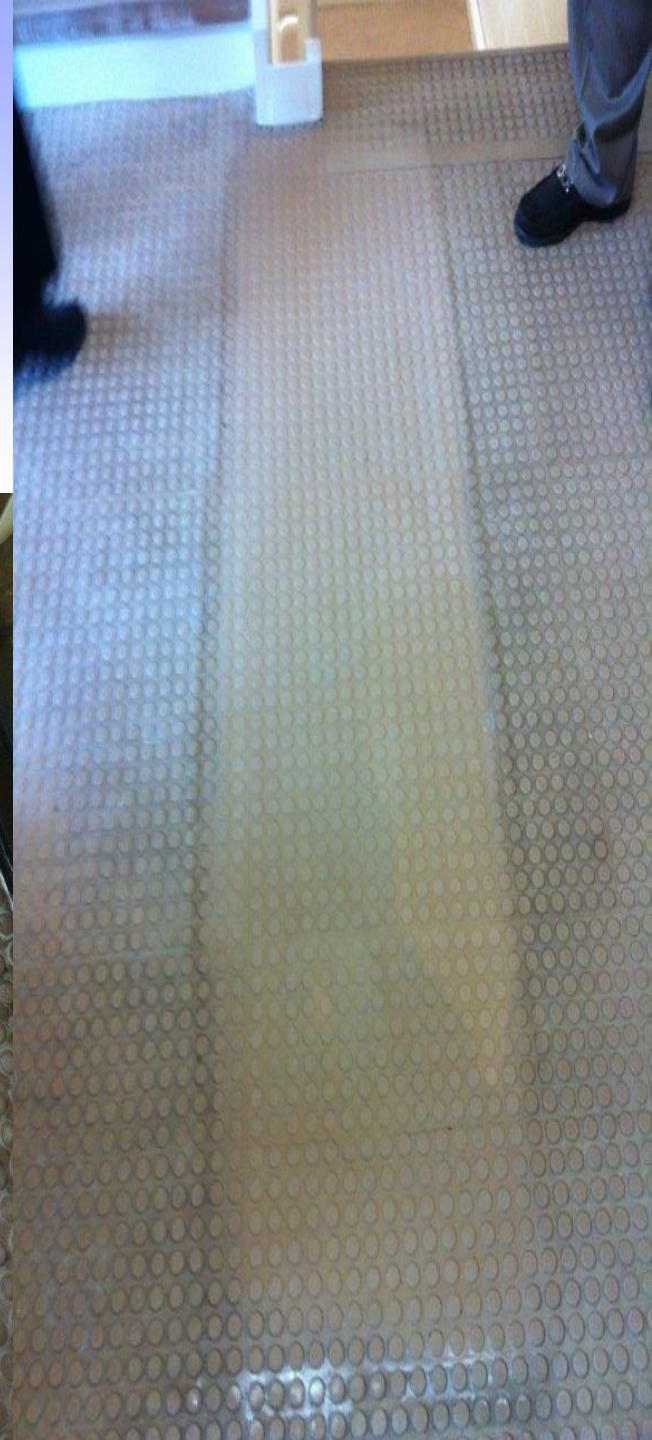




# *Split!* Restorative Cleaner

## Restoration Cleaning

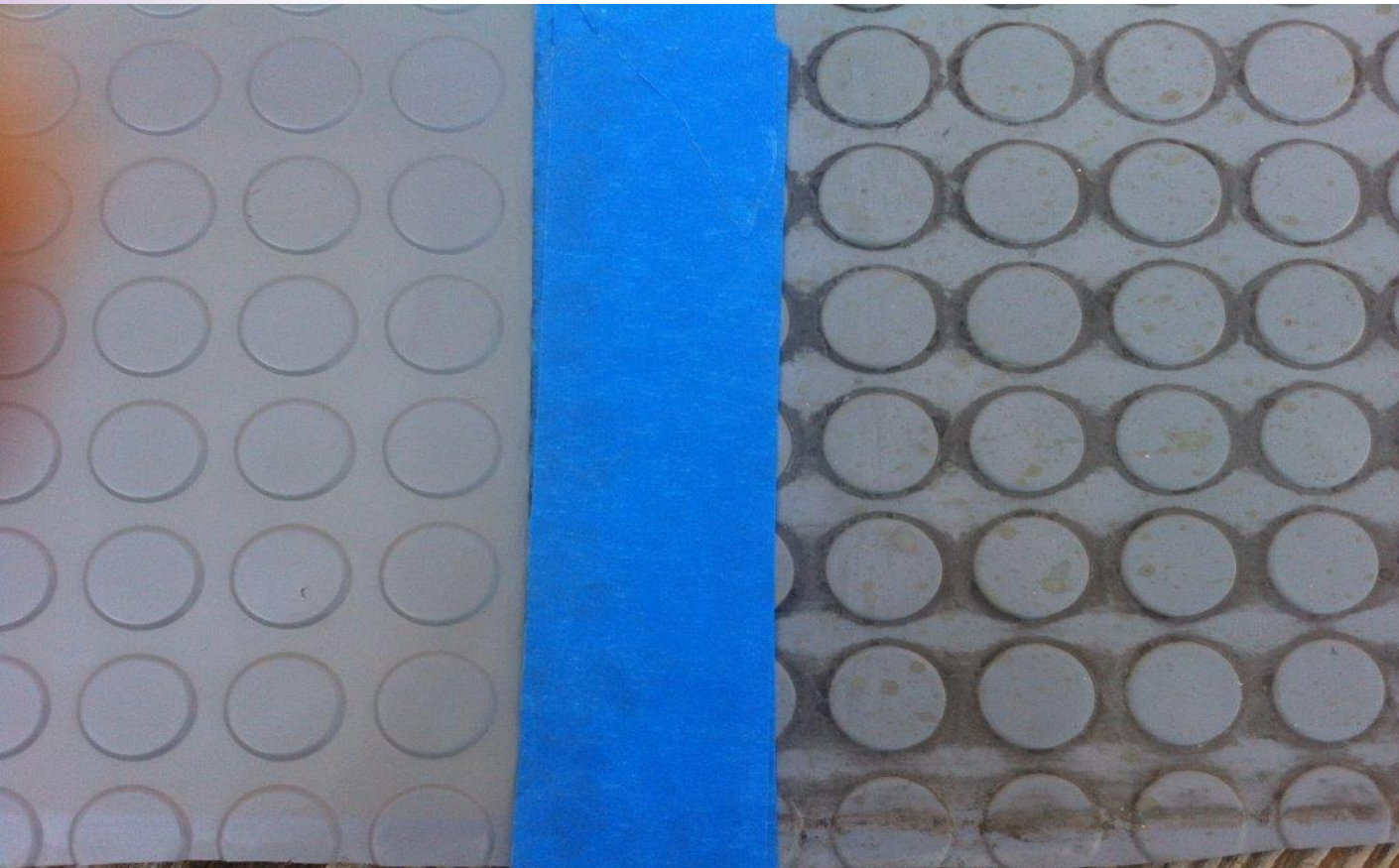
### Rubber Floors



# *Split!* Dynamic Cleaning

## Restoration Cleaning

### Rubber Floors



***Split!* Restorative Cleaner**

**Restoration Cleaning**



**NO – Wax Floor**



# *Split!* Non-Detergent Cleaner



**Non-  
Detergent  
Daily Cleaner**

# Split! Non-Detergent Cleaner

## Non-Detergent Daily Cleaner

Use as an every day spray & wipe

- Office Cleaning
- Restroom Cleaning
- Complete classroom solution
- Shop Degreasing
- Health Care

Use as an every day wet mopping cleaner

- VCT
- Restroom and Kitchen grouted tile
- Hard Floors
- Finished wood floors(gymnasiums)
- Auto-scrubbing



# Split! Carpet & Upholstery Cleaner



## Non-Detergent Carpet & Upholstery

Use as an every day carpet cleaning solution

- Carpet extraction
- Carpet bonnet cleaning with the Camel
- Carpet bonnet cleaning with a 175 RPM FM
- Nylon based rolled carpet
- Carpet Squares
- Natural Fiber

Use as an every day upholstery cleaning solution

- Use as a Pre-Spray with cold water extraction
- Safe on all types of fabrics

Use as an every day spotting cleaning solution

- Use as a spray bottle and pump up spotting solution
- Safe on all types of carpets and fabrics

# Split!

## Dema Dispensers for *Split!* Cleaners

- 822GAP-D1G Dispenser, locking, 2 gal products, 1 at 4 gpm, 1 at 1 gpm.
- 824GAP-D1G Dispenser, locking, 2 gal products at 4 gpm each.
- Other dispenser types available –ask your rep.



# Camel

## Low Moisture Cleaning Machine

Combined with our non-detergent **Split!** cleaners and our **Split!** two pad system will out-perform any other carpet chemical and delivery systems in side-by-side testing. Ideal for carpet and hard floors. Made in USA.

Ergonomic dual steel operating and spraying triggers for left or right handed operation. Simply squeeze both triggers to activate the electric sprayer!

Low 65 decibel operation, no odor cleaning, carpets dry in 15 min!

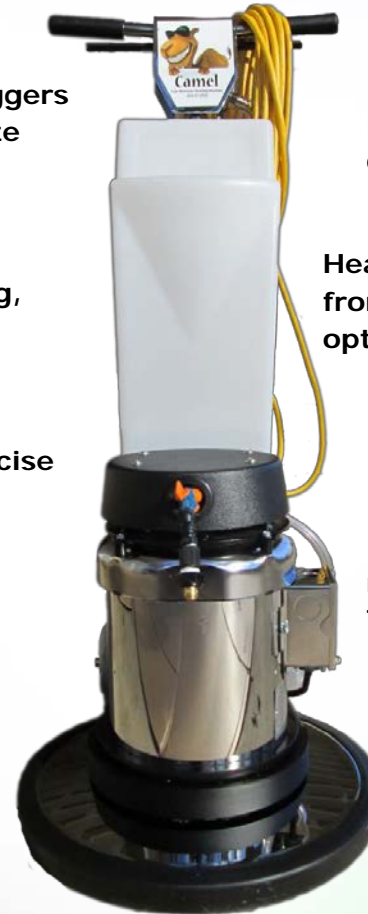
Front mounted machine sprayer for precise solution application.

Unique circular spray pattern provides complete coverage without wetting baseboards, walls or furniture.

Non-Marking  
Wheels

Variable position lock handle conveniently positioned for ergonomic ease, no bending!

Thumb operated safety switch



Extra heavy duty spring steel cord strain relief.

Heavy duty spill proof solution tank for front mount sprayer or center-feed options.

Reduced amp draw and current usage, 9 amps vs. 15 in comparable units.

180 Frame 1.5 hp motor, much stronger than conventional 1.5 hp motors.

Totally enclosed, fan-cooled for longer motor life.

Complete Chrome Covers

Provides more downward pressure than competitive models, weighs 126 lb empty!

**UL/CUL  
Approved**





## MACHINE SPECIFICATIONS

Part #	120099
Brush Diameter	17"
Brush Speed	165 RPM
Motor	1.5 HP TEFC 180 Frame
Gear System	Planetary 3-Idler Severe Duty - Hardened Gears with Steel Gear Box Coupler
Power Cable	50 ft
Weight	126 lbs
Warranty	3 years parts, 1 year labor

## Split! Non-Detergent Cleaning Products

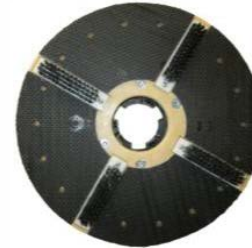


With **Split!** Non-Detergent cleaning products and your **Camel** Low-Moisture floor machine, there is no job too difficult. Our unique **Split!** Non-Detergent cleaning products are incredibly powerful yet they contain no solvents, no VOCs, no oxidizing agents (like hydrogen peroxide), and no odor!

# Camel

## Low Moisture Cleaning Machine

### Camel Accessories



**Unique Brush & Bonnet Pad Driver** for maximum. low-moisture cleaning results. Provides the perfect amounts of agitation and moisture needed to split stubborn soils, stains and detergent residues.



**Slotted Cleaning pad** for the first of two steps. Synthetic blend to split/clean the soil, yet not absorb the split material. Has slots to allow brushes from driver to agitate soil.



**Cotton Wiping pad** for the second step. Cotton blend designed to absorb split material as it dries the carpet fibers. Over-sized to allow wiping of baseboards, etc. .



**Clean Grit Brush** with multi-level bristles to get down into grout as it scrubs the floor. Fine bristles work well in small and large grout lines.

## Split! Not just a Product, but a Program!



### Split offers Training and Training tools for DSR's and End Users

- DSR on site product demonstration
- Manufacturer Rep end user support
- **Split!** inside end user customer support
- Classroom **Split!** training and **Split!** seminars
- Training Tools – Evolving website loaded with information
- Training Tools - Cleaning Procedures
- Training Tools – Wall Charts
- Training Tools – Training Cards
- Training Tools – Videos Coming
- Training Tools – End User Customization



## Carpet Cleaning Procedures



### Split! Cleaning Procedures

**Split! Not just a product, but a program!**

#### Carpet Cleaning Instructions:

1. Vacuum carpet to remove debris.
2. Dilute [Split! Carpet and Upholstery Cleaner](#) 12oz per gallon cold water in the tank of The Camel Low-Moisture Carpet machine.
3. For heavy soil or residue, you may use [Split! Restorative Cleaner](#) for the first cleaning, then Split! Carpet and Upholstery cleaner in the future.
4. *Split!* the Soil: Equip The Camel with the *Split!* Brush-N-Bonnet pad driver with a slotted bonnet.
5. Pre-spray bonnet with solution until damp.
6. Spray solution as you walk forward and side-to-side into soiled areas.
7. Retreat back the same pass, scrubbing again. Repeat the forward path, spraying solution and scrubbing as you go, and return.
8. You may repeat this procedure up to 3 times for heavily soiled carpet. Spray generously for traffic patterns and heavily soiled areas, but spray very lightly on drink spills!
9. Wipe it Up: Before the area cleaned can dry, use our 100% cotton wiping pads on the floor machine to absorb the now released soil.
10. Equipment Substitutions and Alternative Methods
  11. If you do not have The Camel, you may use a standard 175 rpm floor machine for low-moisture cleaning. Dilute [Split! Carpet and Upholstery Cleaner](#) 12oz per gallon of cold water in an electric or pump-up tank sprayer to be used as a pre-spray.
  12. Equip the floor machine with the *Split!* Brush-n-Bonnet pad driver with slotted bonnet OR use a scrubbing bonnet (with scrub strips).
  13. Dampen bonnet, then evenly spray only as much carpet as you can scrub with the floor machine before it dries.
  14. Continue as above, ending by replacing the damp pad with dry 100% cotton wiping bonnets to "dry extract" the cleaning solution and soil.
  15. [Split! Carpet and Upholstery Cleaner](#) may be used with other low-moisture equipment, carpet extractors and bonnet systems. For use in carpet extractors, dilute *Split!* at 3-4 oz per gallon of cold water in tank.
  16. Solution feed systems are not recommended.

Note: When first transitioning from detergent-based cleaning to non-detergent cleaning, you may experience "suds" in the carpet being cleaned. This is residue from previous detergent cleanings. If large volumes are present, you may consider wet extraction after scrubbing instead of dry extraction with bonnets. You will then proceed to low-moisture cleaning after that.





## Split! Wall Chart


Split! Not just a product, but a program!





### Wall Chart Restroom Cleaning


- 


Remove large debris such as paper from restroom floor. Remove the filled trash liner from the trash dispenser. Remove any feminine napkin trash liners and replace.
- 


Dust mop restroom floor with a 24" microfiber dust mop system (floor tool, handle and dust mop).
- 


Have available **Split! Non-Detergent Cleaner** diluted at 16 oz. per gallon in a spray bottle and the same **Split!** product with the same dilution in a mop bucket to mop and clean the floors.
- 


Have available microfiber cloths for spray a wipe cleaning and a microfiber floor tool with microfiber cleaning pads for mopping along with the filled bucket mentioned above.
- 


Spray sinks, urinals, and toilets with **Split!** and let dwell for 5 minutes.
- 


Spray/clean doors, partitions, outside of dispensers, hand dryers and any other touch points in the restroom.
- 

Clean sinks, urinals and toilets respraying areas that might of dried already. (Be aware of rust and other difficult hard water stains in toilets and urinals that may still need an acid based bowl cleaner to remove those stains.). Use a bowl brush in toilets to remove any stubborn stains.
- 

You may use other cleaning tools such nylon brushes or green hand pads depending on the surface. Always follow the "Finest First" rule, which is using the less aggressive and safest method to clean the surface without damaging it.
- 

Clean mirrors and polish with a dry microfiber. Dry off sinks, urinals, toilets and dispensers with microfiber cloths where needed.
- 

Replace and fill paper product dispensers and hand soap dispensers.
- 

Check - to see if all work above is completed correctly.
- 

Finish by wet mopping the floor with **Split! Non-Detergent Cleaner** in a mop bucket with microfiber mops or a microfiber flat mop system. Leave wet floor signs up until dry.

# Split! Training Cards

Split! Not just a product, but a program!

Cleaning Tasks:		Split!	Application Method
Pick up paper and any debris on floor and throw in trash. Use proper PPE and signage.			
Replace trash liners. Place trash in utility cart for disposal.			
Spray and wipe trash cans with <b>Split!</b> in a spray bottle with a microfiber cloth.		<b>Split! Non-Detergent</b>	Microfiber Cloth-S/Btl.
Dust vents with a microfiber dusting tool or microfiber cloth.			Microfiber Dusting Tool
Spot Clean vents with Split! Non-Detergent Cleaner as needed.		<b>Split! Non-Detergent</b>	Microfiber Cloth-S/Btl.
Dust vertical surfaces and desks where needed with a microfiber dusting tool or microfiber cloth.			Microfiber Dusting Tool
Clean desks, touch areas and vertical surfaces using <b>Split!</b> in a spray bottle.		<b>Split! Non-Detergent</b>	Microfiber Cloth-S/Btl.
Spot Clean glass and mirrors with <b>Split!</b> and a microfiber cloth.		<b>Split! Non-Detergent</b>	Microfiber Cloth-S/Btl.
Go back over any glass or mirrors that are still smudged with a dry microfiber.			Microfiber Cloth-Dry
Vacuum carpet and hard floors with a backpack vacuum or an upright vacuum.			Backpack/Upright Vacuum
Spot mop any hard surface floor areas with <b>Split!</b> diluted 4 oz per gallon.		<b>Split! Non-Detergent</b>	Microfiber floor tool/bucket
Spot Clean carpet with <b>Split!</b> Follow spot cleaning for carpets procedures.		<b>Split! Carpet and Upholstery</b>	Microfiber Cloth-S/Btl.
Equipment Needed:		Notes:	
Always wear appropriate Personal Protective Equipment. Display wet floor signs where needed. <ul style="list-style-type: none"> <li>Microfiber Cloths-wet cleaning</li> <li>Microfiber floor tool and bucket</li> <li>Microfiber Cloths-dry cleaning</li> <li>Bottles&amp;Trigger Sprayers</li> <li>Microfiber Dusting Tools</li> <li>Labels</li> <li>For hard to reach areas use proper safe <b>Split! Carpet and Upholstery</b> equipment with extension poles</li> <li><b>Non Detergent Cleaner</b></li> <li>Backpack/Upright Vacuum</li> </ul>	Display wet floor signs where needed. <ul style="list-style-type: none"> <li>Quart</li> <li>Bottle</li> <li><b>Split!</b></li> <li><b>Split!</b></li> <li>Can Liners</li> </ul>	Note - Keep wet floor signs in place until the floor is dry. Note - for more stubborn cleaning areas, use <b>Split! Restorative Cleaner</b> in place of the <b>Non-Detergent Cleaner</b> . Follow directions from other training documents for the cleaning procedures. If you can remove dry dirt first with a dry cleaning system, wet cleaning will be much easier and faster.	

Cleaning Tasks:		Split!	Application Method
Pick up paper and any debris on floor and throw in trash. Use proper PPE and signage.			
Refill paper products dispensers and hand soap dispensers where applicable.			
Replace trash liners. Place trash in utility cart for disposal.			Microfiber Cloth-S/Btl.
Spray and wipe trash cans with <b>Split!</b>		<b>Split! Non-Detergent</b>	Microfiber Dusting Tool
Dust vents and spot clean vents as needed. Use microfiber dusting tools		<b>Split! Non-Detergent</b>	Microfiber Cloth-S/Btl.
Dust vertical surfaces and desks where needed with a microfiber dusting tool or microfiber cloth.			Microfiber Dusting Tool
Clean desks, touch areas and vertical surfaces using <b>Split!</b> in a spray bottle.		<b>Split! Non-Detergent</b>	Microfiber Cloth-S/Btl.
Spot Clean glass and mirrors with <b>Split!</b> and a microfiber cloth.		<b>Split! Non-Detergent</b>	Microfiber Cloth-S/Btl.
Go back over any glass or mirrors that are still smudged with a dry microfiber.			Microfiber Cloth-Dry
Vacuum carpet and hard floors with a backpack vacuum or an upright vacuum.			Backpack/Upright Vacuum
Spot mop any hard surface floor areas with <b>Split!</b> diluted 4 oz per gallon.		<b>Split! Non-Detergent</b>	Microfiber floor tool/bucket
Spot Clean carpet with <b>Split!</b> Follow spot cleaning for carpets procedures.		<b>Split! Carpet&amp;Upholstery</b>	Microfiber Cloth-S/Btl.
Equipment Needed:		Notes:	
Always wear appropriate Personal Protective Equipment. Display wet floor signs until floor dries. <ul style="list-style-type: none"> <li>Microfiber Cloths-wet cleaning floor tool and bucket</li> <li>Microfiber Cloths-dry cleaning Bottles&amp;Trigger Sprayers</li> <li>Microfiber Dusting Tools</li> <li>For hard to reach areas use proper safe <b>Split! Carpet and Upholstery</b> equipment with extension poles</li> <li><b>Non Detergent Cleaner</b></li> <li>Backpack/Upright Vacuum products,Liners,Hand Soap</li> </ul>	Display wet floor signs until floor dries. <ul style="list-style-type: none"> <li>Microfiber</li> <li>Quart</li> <li>Bottle Labels</li> <li><b>Split!</b></li> <li>Paper</li> </ul>	Note - Keep wet floor signs in place until floor is dry. Note - To clean whiteboards and blackboards, use <b>Split! Restorative Cleaner</b> in a spray bottle diluted 16 oz per gallon or a 10 quart bucket, same dilution. Clean with a microfiber cloth. Have dry microfibers available to dry surface after cleaning. Note - for more stubborn cleaning areas, use <b>Split! Restorative Cleaner</b> in place of the Non-detergent cleaner. Follow directions from other training documents for the cleaning procedures.	

# Split! Not just a product, but a program!

<https://www.bicravenreps.com/>

# Split!

[How to Become  
a Member](#)

[Login/Sign up](#)



Western Reps for **Split!**

[Home](#)

[Products](#)

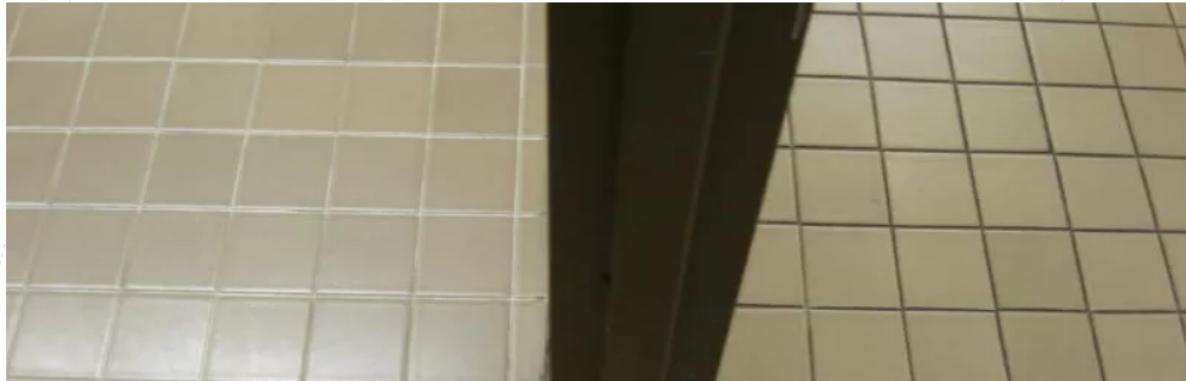
[Equipment](#)

[Literature](#)

[Photos](#)

[About](#)

[Training](#)



"Our revolutionary Split! Non-Detergent Cleaners  
contain no detergent at all!"

– Steve McLaughlin

Split! products work by micro-splitting all organic non-solid molecules to pieces, including detergent residues left behind from



## Healthcare

- ATP removal is an amazing new weapon in your infection prevention arsenal.
- Combine safer, yet more effective cleaning with improved sanitation on all types of floor surfaces and touch points.
- **Split!** Non-Detergent Cleaners have no scent at all and are safe to use around patients and staff.

## Schools & Universities

- Increase student and faculty attendance by maintaining a safer learning environment.
- Reducing the spread of illnesses in classrooms, dining and food prep areas, restrooms, and other common areas.
- Protect the investment of your building fixtures and finishes by keeping surfaces cleaner and reducing or eliminating high impact restorative cleaning.
- Let's talk LEED!



## **Corporate Office Space**

## **Manufacturing**

## **Service Contractors**

- As building owners and property managers know, much goes into keeping a customer happy.
- Cleanliness and appearance are critical to the overall satisfaction of the building occupants, and preserving the interior fixtures and finishes are important to the bottom line.
- High performance cleaning protocols are no longer an option; they are a necessity, as employees demand a healthy, attractive work environment.
- Let us help you take your cleaning staff to the next level.
- Often neglected from the high performance cleaning conversation, manufacturing facilities benefit greatly from Split! Non-Detergent Cleaning products.
- Oil residue on floors can be removed daily, much easier, and with less environmental impact than traditional or even “green degreasers”.
- A cleaner environment for those working in manufacturing can result in higher morale, increased performance, and better employee retention.
- Let us show you how!
- Once you’ve won the bid, you’ve got to deliver AND make a profit.
- We can work with you to design a green cleaning protocol (let’s talk LEED!) that is flexible, efficient, effective, and VERY productive.
- We can help you present your proposal to potential clients, and train your staff when you’ve won!



# Split!



- Non-Detergent Cleaning with Split! gives you a truly clean surface.
- **Split!** removes tough soil, ATP, and even old detergent residues.
- **Split!** leaves nothing behind to attract more dirt.
- Carpets cleaned with **Split!** stay clean 4 to 8 times as long.
- Bare floors resist re-soiling for twice as long.
- Savings on stainless steel are even greater.
- The **Split!** system gets your facility cleaner and allows you to keep it that way with less frequent cleanings.
- Less frequent cleanings translate to savings on electricity, fresh water, treatment of soiled water, and volume of packaging to our landfills.
- NO detergent-based cleaner can do the same.

**NOT just another green  
cleaning product...  
This changes everything!**



# Split!

- Non-Detergent Cleaning protocol customized for your facility.
- Training and Support for your cleaning staff.
- Validation and Documentation of Cleaning Effectiveness, Labor Savings and More.
- Cleaning products, tools and equipment.
- The Camel low-moisture carpet cleaning machine and accessories.

split!