



No-Wax Floors Maintenance Training Card

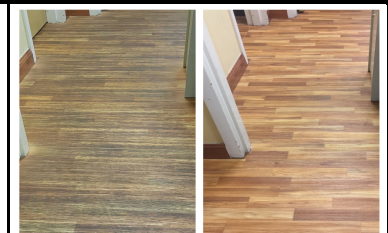


Cleaning Tasks:	Split!	Application Method
Move any furnishings or items in the cleaning area. Setup wet floor signs.		
Remove any paper or larger debris from cleaning area wearing proper PPE.		
Dust Mop area to be cleaned with properly sized microfiber dust mop.		Microfiber Dust Mop
Use an automatic scrubber with diluted <i>Split!</i> Non Detergent Cleaner, 2-4 oz per gallon in the tank using a soft nylon brush or a white or red pad. OR:	<i>Split! Non-Detergent</i>	Autoscrubber w/Pad or Brush
Use a microfiber flat mop and bucket cleaning floor diluted 2-4 oz per gallon, while changing the used solution every 300-500 square feet.	<i>Split! Non-Detergent</i>	Microfiber Flat Mop Tool, Floor Pad&Bucket
Repeat cleaning passes on floor areas that are stubborn.		
Wait until dry, then put back furnishings and remove wet floor signs.		
If possible, do not allow the use of any detergent at any time, as a single application will require another restorative cleaning to remove the residue		
Use microfiber cloths to wipe up any excess water/solution.		Microfiber Cloths

Equipment Needed:	Notes:
<p>Always wear appropriate Personal Protective Equipment.</p> <ul style="list-style-type: none"> Microfiber Floor Tool, Cleaning Pads & Bucket Automatic Scrubber with White/Red Floor Pads or Soft Nylon Brush Microfiber Cleaning Cloths 	<p>Display wet floor signs until floor dries.</p> <ul style="list-style-type: none"> 2 Cup Measuring Cup Putty Knife(for gum) <i>Split!</i> Non Detergent Cleaner <p>On No-Wax floors, problems are even more noticeable. Without finish on top to keep cleaning solutions out of the seams, surface scratches, and low spots in textured floors, detergent residue builds up in them. Black soil attaches to it. The seams appear as though they are separating, and light surface scratching becomes dark and visible. Textured floors just stay dirty. You will eliminate detergents from the cleaning operation with <i>Split!</i> Non-Detergent Cleaner.</p>



No-Wax Floors Restorative Training Card



Cleaning Tasks:	Split!	Application Method
Equip a rotary 175rpm floor machine with a white floor pad/soft nylon brush.		175 RPM Floor Machine
Dilute 12-16 oz per gallon with cold water	<i>Split! Restorative Cleaner</i>	Mop Bucket Or:
Apply the solution liberally to the floor by mop or using a solution tank.		Solution Tank
Allow the solution to dwell for five or ten minutes prior to scrubbing.	<i>Split! Restorative Cleaner</i>	
Scrub repeatedly with a standard 175 rpm floor machine equipped with a cleaning floor pad or soft bristle brush.		Machine with Brush
Use long-handled scrub brush (grit, for tile) for areas that cannot be reached by machine.		Long Handle Scrub Brush
Continue scrubbing each area until large amounts of detergent suds are released from the floor.		175 RPM Floor Machine
It is important to vacuum up the suds and soil prior to the slurry drying.		Wet/Dry Vacuum
Rinse with Water	Water	Mop and Bucket

Equipment Needed:	Notes:
<p>Always wear appropriate Personal Protective Equipment.</p> <ul style="list-style-type: none"> 175 RPM Floor Machine or CAMEL White/Red Pads or soft nylon brush Wet/Dry Vacuum Mop Bucket and Microfiber Mops Microfiber Cloths(for spot cleaning) 	<p>Display wet floor signs until floor dries.</p> <ul style="list-style-type: none"> Long Handle Scrub Brush Putty Knife for Gum 2 Cup Measuring Cup <i>Split!</i> Restorative Cleaner <p>Once detergent residues and attached soil are removed, the floors return to their original appearance! Seams appear to go back together, and surface scratches become invisible. Textured floors return to their original look. <i>Split!</i> Restorative Cleaner removes all of the detergent residue and attached soil from previous cleanings.</p>