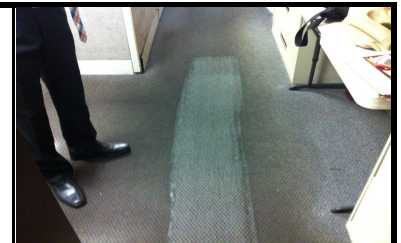




Window Restorative Cleaning Training Card

Cleaning Tasks:	Split!	Application Method
Dilute <i>Split!</i> Restorative Cleaner at 12 oz per gallon of cold water in bucket.	<i>Gd Jh Restorative Cleaner</i>	
Submerge a blue micro-fiber wiper, and wring it out thoroughly.		ier Clot et
:] " Vē X k UHYF] b U gYVēbX ga U " Vi W_YH "		
Gi Va Yf [Y U [fYYb a] Wc! ZVYf k] dYfz UbX k f] b [] hci h h c fci [\ m'	Water	ier Clot et
I gY dfY! k YHhX V i Y a] Wc! ZVYf k] dYf hc WYUbz hi fb] b [] h c j Yf UbX fY! Zc X] b [] h	<i>Split! Restorative Cleaner</i>	ier Clot
F Y dY U h h Y d f c W X i f Y k] h h Y d f Y! k Y H h X [f Y Y b a] W c! Z V Y f k] d Y f "	K UHYF	reen Microfiber Cloth
H h c fci [\ m' k] d Y X f m [f Y Y b a] W c! Z V Y f k] d Y f " : U b U F Y U k] h U X f m [f Y Y b k] d Y f "		: f Y Y b A] W c! Z V Y f 7 c h
F Y! g i Va Y f [Y h Y V i Y a] W c! Z V Y f k] d Y f] b h Y g c i h c b z k f] b [] h c i h h c fci [\ m'	<i>Split! Restorative Cleaner</i>	6 i Y A] W c! Z V Y f 7 c h
F Y! g i Va Y f [Y h Y [f Y Y b a] W c! Z V Y f k] d Y f] b k U h Y f U b X k f] b [] h c i h h c fci [\ m'	ater	reen Microfiber Cloth
F Y d Y U h h Y U V c j Y g h Y d g (! * c b h Y b Y I h g Y W] c b c Z] b h Y f] c f k] b X c k g "		

Equipment Needed:	Notes:
<p>Always wear appropriate Personal Protective Equipment.</p> <ul style="list-style-type: none"> • 6 i Y Microfiber Cloths! k Yh WYUb] b [• ; fYYb A] Wc! ZVYf 7 c h g! k Yh WYUb] b [• ; fYYb A] Wc! ZVYf 7 c h g! Xfm WYUb] b [• & YU " % \$ e h " Vi W_Yhg c f U g d] h Vi W_Yh • : c f \ U f X h c f Y U W U F Y U g i g Y d f c d Y f g U Z Y • Yei] da Ybhk] h Y I h Ybgjcb dc Yg 	<p>Display wet floor signs until carpet dries.</p> <ul style="list-style-type: none"> • 10 Quart Bucket • 2 Cup Measuring Cup • Putty Knife # Uncf G W U d Y f • <i>Split!</i> F Y g h c f U h j Y Cleaner • <i>Split!</i> Bcb 8 Y h Y f [Ybh 7 Y U b Y f " <p>I gY U b m h k c Vē c f g c Z a] W c! Z V Y f k] d Y f g z U g] h] g] a d c f H U b h h c _ b c k k \] W c b Y \ U g h Y W Y U b Y f c b] h " G d] h " c c _ g U b X g a Y " g] _ Y k U H Y F "</p> <p>D U W U b Y I h U k] d Y f c Z Y U W U Wē c f] b h Y U d d f c d f] U H Y V W_Y h z g c m c i _ b c k k \] W c b \ U g h Y W Y U b Y f] b] h "</p> <p>C b m W Y U b U g U f [Y c Z U b U F Y U g m c i W U b k] h c i h] h X f m] b [V Y z c f Y m c i [Y h V U W U h c f] b g Y c f X f m] h "</p>



Stainless Steel Restorative Training Card

Cleaning Tasks:	Split!	Application Method
8] i h Y U h % c n d Y f [U c b c Z Vē X k U H Y f] b U g a U z c d Y b h c d V i W_Y H "	<i>Gd Jh Restorative Cleaner</i>	ier Clot et
Gi Va Yf [Y U [fYYb a] Wc! ZVYf k] dYfz UbX k f] b [] hci h h c fci [\ m'		Green Microfiber Cloth
:] " U g Y Vē b X g a U z c d Y b h c d V i W_Y h k] h Vē X k U H Y f "		A] W c! Z V Y f 7 c h / 6 i W_Y h
S er e a l e i r o i e r w i e r a n d w r i n i t o t t o r o l	Water	ier Clot
Start at the top and work down in a side to side motion.		
Thoroughly wipe the polish off with the pre-wetted green microfiber wiper.	<i>Split! Restorative Cleaner</i>	reen Microfiber Cloth
Before that is dry, repeat with a pre-wetted blue microfiber wiper.	Water	Blue Microfiber Cloth
Before that is dry, thoroughly wipe dry with a clean, dry microfiber wiper.		A icrofiber 7loth
Re-submerge the green microfiber wiper in solution, wring it out thoroughly.	<i>Split! Restorative Cleaner</i>	reen Microfiber Cloth
Re-submerge the blue microfiber wiper in water, wring it out thoroughly.	Water	Blue Microfiber Cloth
Repeat the above steps 4 - 6 on the next section of stainless steel.		

Equipment Needed:	Notes:
<p>Always wear appropriate Personal Protective Equipment.</p> <ul style="list-style-type: none"> • 6 i Y A] W c! Z V Y f 7 c h g! k Y h W Y U b] b [• ; f Y Y b A] W c! Z V Y f 7 c h g! k Y h W Y U b] b [• ; f Y Y b A] W c! Z V Y f 7 c h g! X f m W Y U b] b [• & Y U " % \$ e h " V i W_Y h g c f U g d] h V i W_Y h 	<p>Display wet floor signs until carpet dries.</p> <ul style="list-style-type: none"> • % \$ E i U f h 6 i W_Y h • & 7 i d A Y U g i f] b [7 i d • F Y g h c f U h j Y 7 Y U b Y f " • B c b 8 Y h Y f [Y b h 7 Y U b Y f " <p>Split! Carpet and Upholstery Cleaner may be used with other low-moisture equipment, carpet extractors and bonnet systems. For use in carpet extractors, dilute Split! at 3-4 oz per gallon of cold water in tank.</p>